



RemoteApp Connection Instructions

Web Browser

1. Open Internet Explorer and go to the following URL:

<https://sierra.win.ad.jhu.edu/rdweb>

2. Enter the domain (**WIN**) followed by your **JHED ID** in the Username box (example: **win\jsmith1**). Enter your JHED password in the Password box. Click **Sign in**.

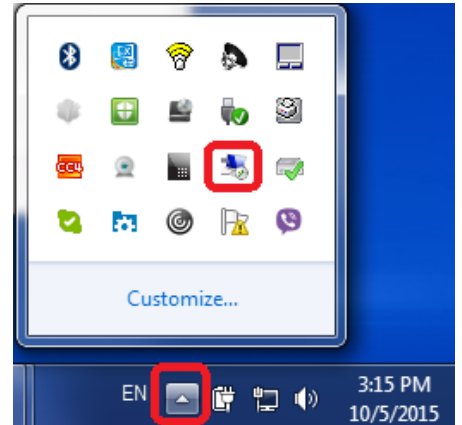


3. Available resources and applications:





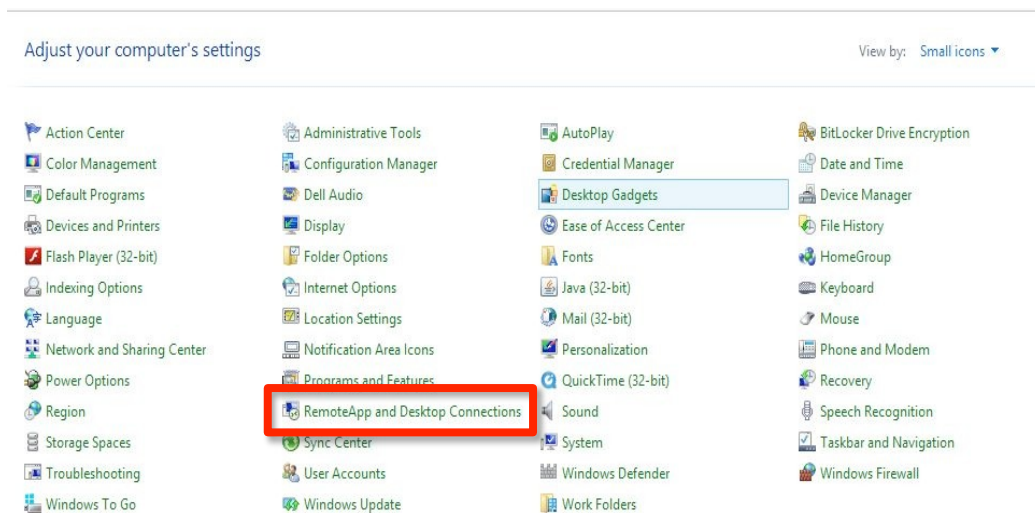
- To leave the launched remote app running and disconnect from the remote session look for the RemoteApp icon in the lower right tray. Right click on the icon and choose "Disconnect all Connections." Your application will continue to run on the server. Next time you launch the same RemoteApp you will see your progress.



Windows Users

Note: To access the RemoteApps off campus, you must be connected to the Hopkins network via **Pulse Secure (VPN)**.

- Go to **Start > Control Panel > RemoteApp and Desktop Connections**.



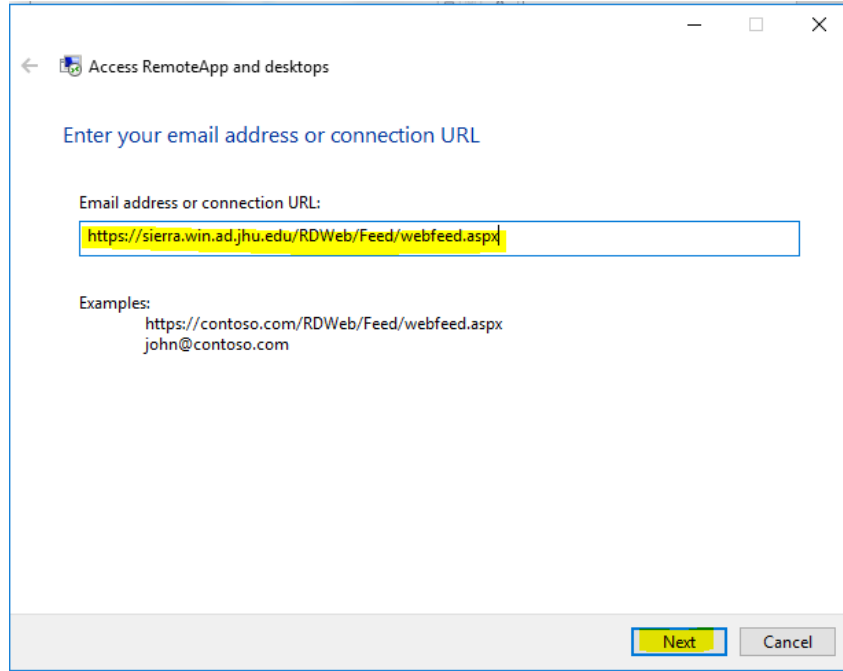
- Click **Access RemoteApp and Desktops** (Windows 10 pictured below, Windows 7 click **Set up a new connection with RemoteApp and Desktop Connections** on the left).



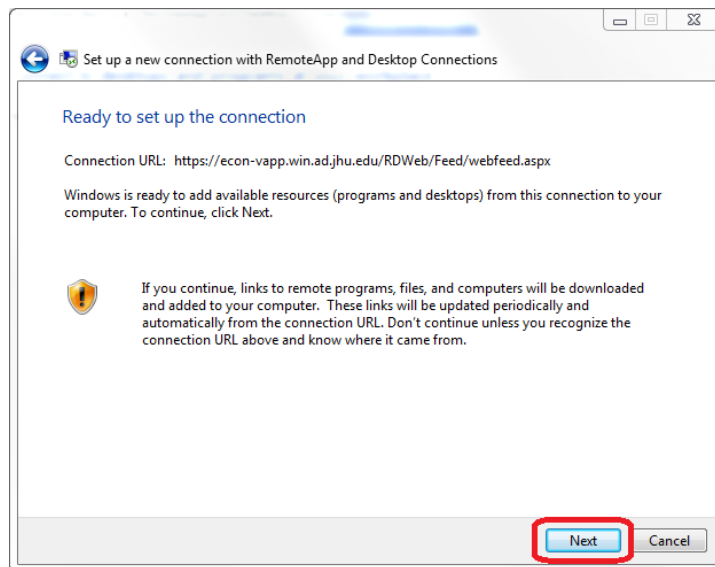


3. Enter the following URL and click **Next**:

<https://sierra.win.ad.jhu.edu/RDWeb/Feed/webfeed.aspx>

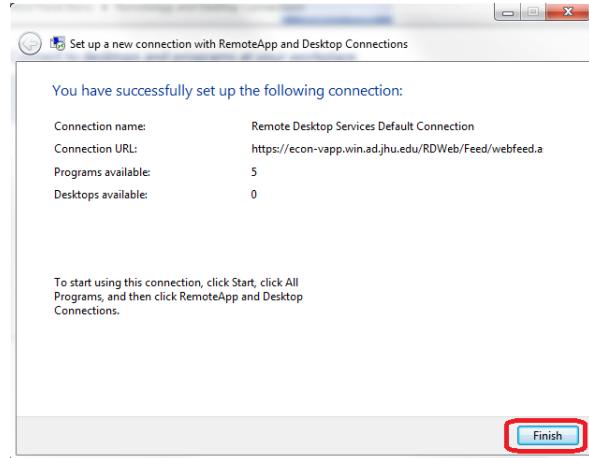
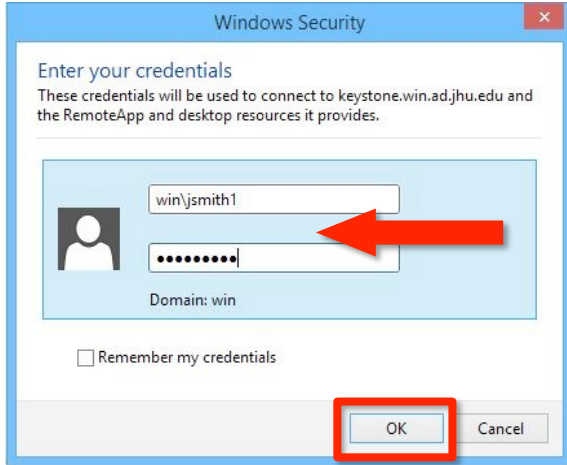


5. Click **Next**.

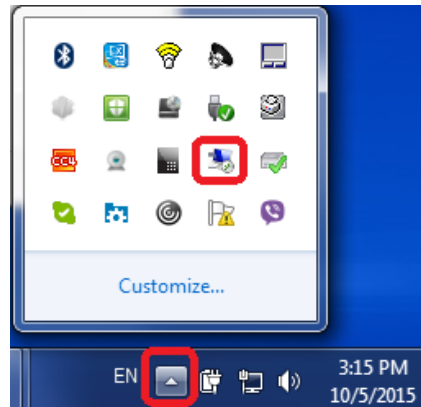




6. Enter the domain (**WIN**) followed by your **JHED ID** in the Username box (example: **win\jsmith1**). Enter your JHED password in the Password box. Click **OK** and then **Finish**.



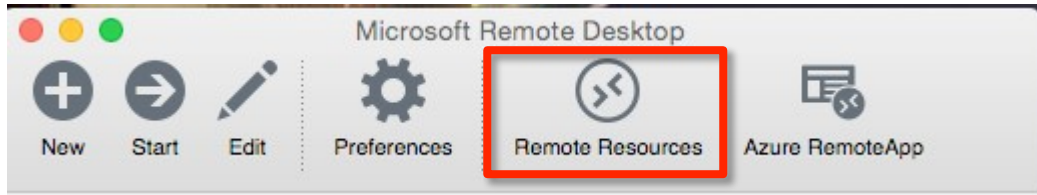
7. Close **Control Panel**.
8. The programs will automatically be added to the **Start > All Programs** menu.
9. To leave the launched remoteapp running and disconnect from the remote session look for the RemoteApp icon in the lower right tray. Right click on the icon and choose "Disconnect all Connections." Your application will continue to run on the server. Next time you launch the same RemoteApp you will see your progress.



MAC Users

Note: To access the Remote Apps off campus, you must be connected to the Hopkins network via **Pulse Secure** (VPN).

1. Download the **Microsoft Remote Desktop** app from the App Store.
2. Open **Microsoft Remote Desktop** and click **Remote Resources**.

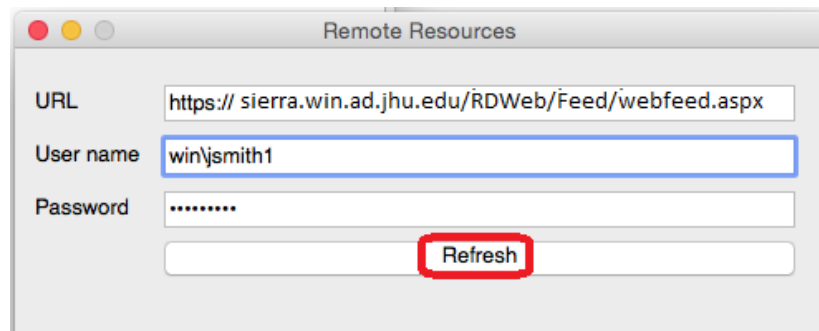


3. Enter the following URL:

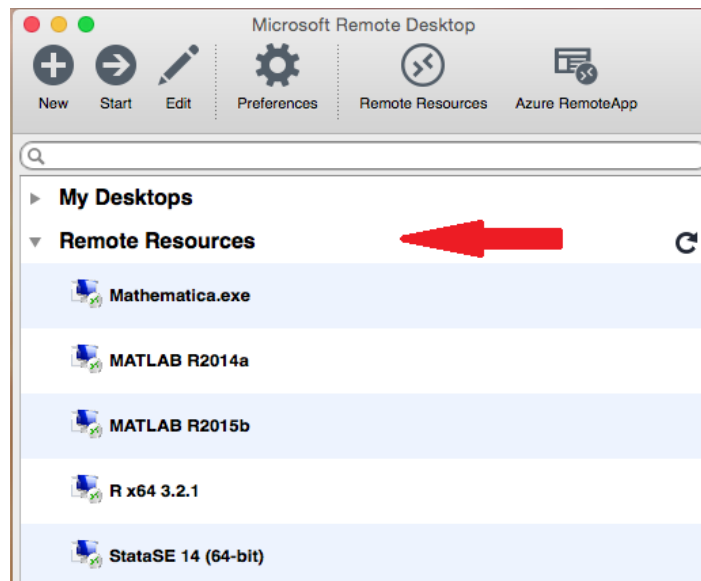
<https://sierra.win.ad.jhu.edu/RDWeb/Feed/webfeed.aspx>

Enter the domain (**WIN**) followed by your **JHED ID** in the Username box (example: **win\jsmith1**).

Enter your JHED password in the Password box. Click **Refresh**.



4. **Remote Resources** are now available.





To leave the launched remote app running and disconnect from the remote session quit the Microsoft Remote Desktop from the menu bar. Do not close the application. Your application will continue to run on the server. Next time you launch the same RemoteApp you will see your progress.

