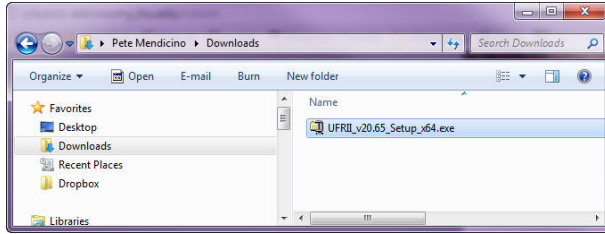
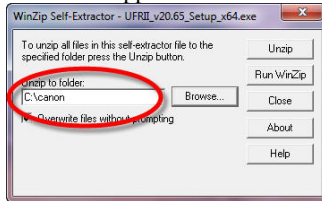


These instructions are GUIDELINES for installing the new Canon printer drivers on Windows 7 64-bit computers.

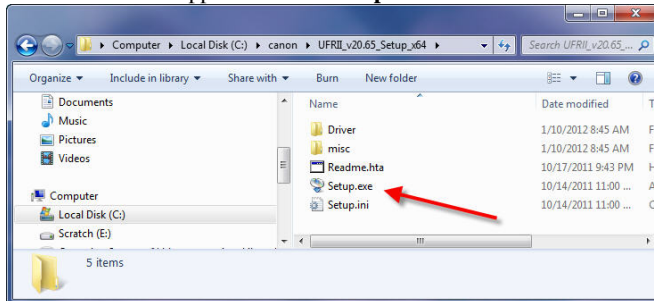
1. Download the installer
2. Execute the file once downloaded.



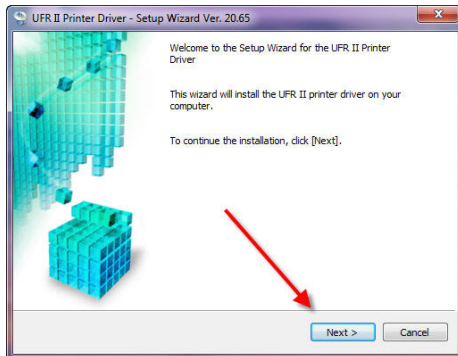
3. Save unzipped files to c:\canon.



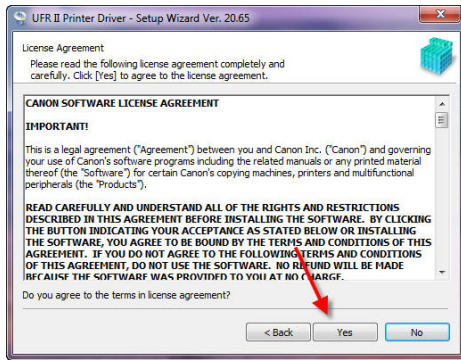
4. Execute the unzipped installer "setup.exe".



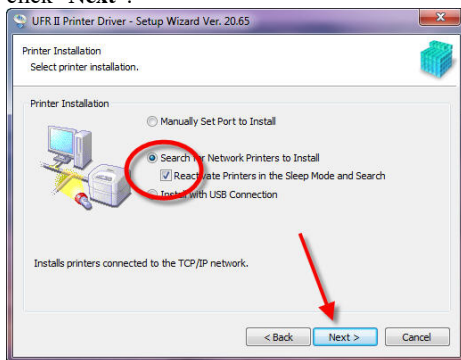
5. At "welcome" click "Next".



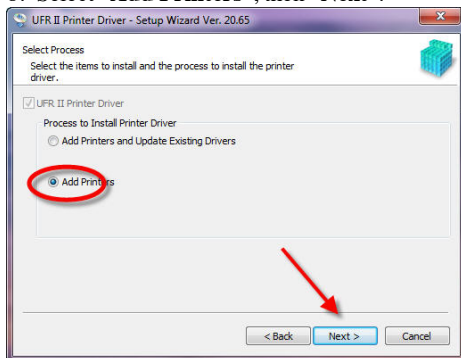
6. Click "Yes" to accept the License Agreement.



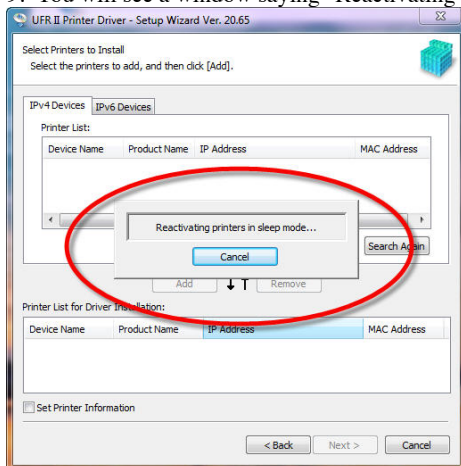
7. Select "Search for Network Printers to Install", and "Reactivate Printers in the Sleep Mode and Search", then click "Next".



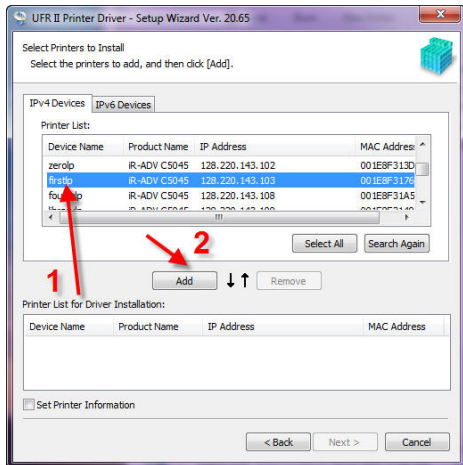
8. Select "Add Printers", then "Next".



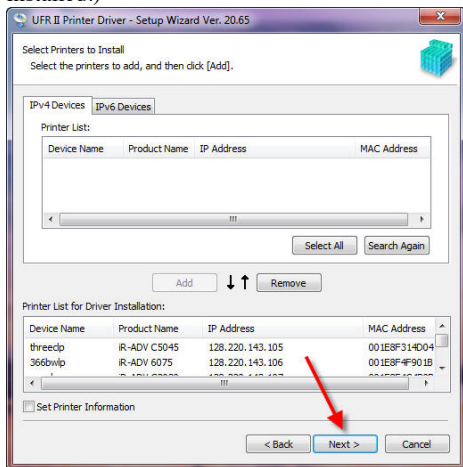
9. You will see a window saying "Reactivating printers in sleep mode..." This may take a few seconds.



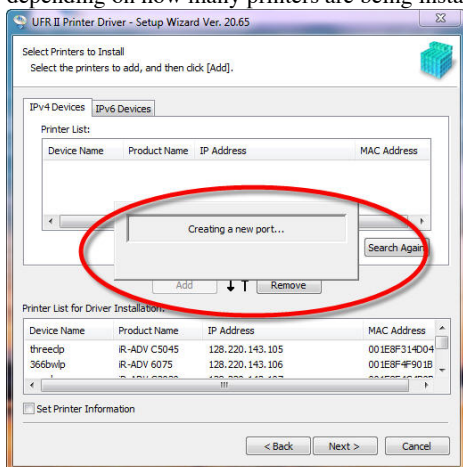
10. Click on the printer(s) you want to install, then click on "Add".



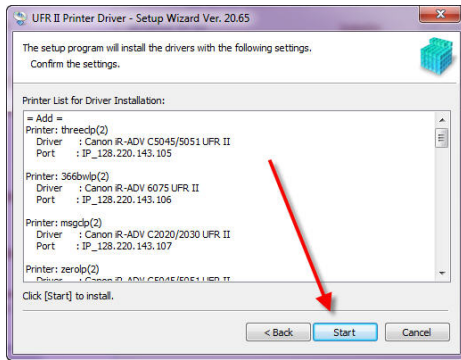
11. When all of the printers you want to install are on the list "Printer List for Driver Installation:", click "Next" (until all of the new printers are installed throughout the building, please only select printers that you know have already been installed.)



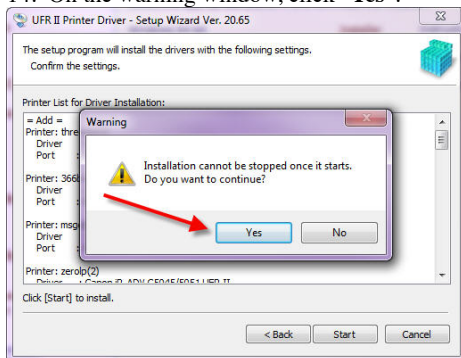
12. You will see a window saying "Creating a new port...". This may take from a few seconds to a few minutes depending on how many printers are being installed.



13. You will see a window detailing all of the printers to be installed. Click "Start".



14. On the warning window, click "Yes".



15. Restart your computer.

Select your default printer if necessary. **Start > Devices and Printers > right-click on the printer you want for the default > click "Set as default printer "**