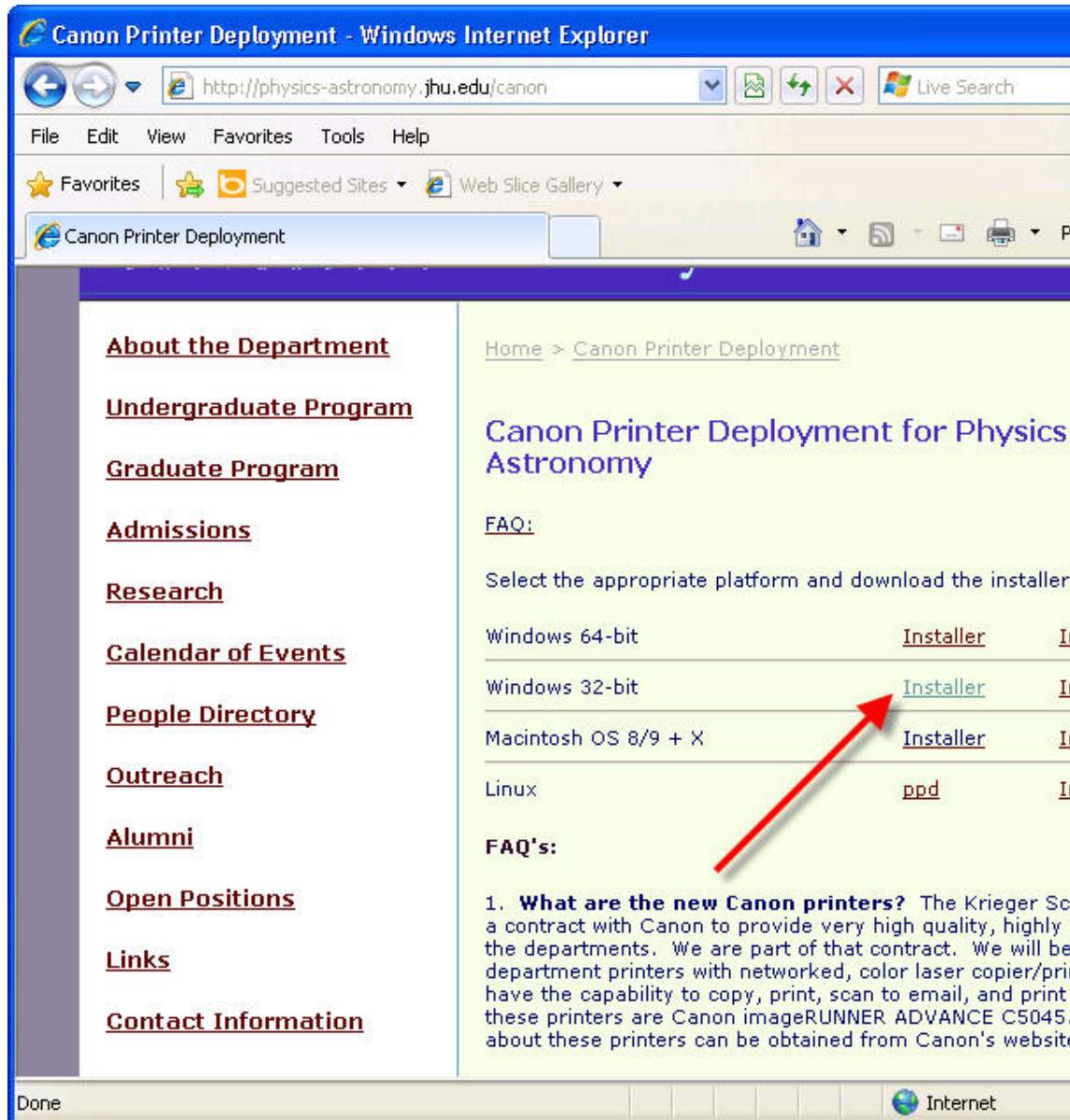


These instructions are GUIDELINES for installing the new Canon printer drivers on Windows XP 32-bit computers.

1. Download the installer



The screenshot shows a Windows Internet Explorer browser window titled "Canon Printer Deployment - Windows Internet Explorer". The address bar shows the URL "http://physics-astronomy.jhu.edu/canon". The page content includes a navigation menu on the left with links like "About the Department", "Undergraduate Program", "Graduate Program", "Admissions", "Research", "Calendar of Events", "People Directory", "Outreach", "Alumni", "Open Positions", "Links", and "Contact Information". The main content area is titled "Canon Printer Deployment for Physics Astronomy" and contains an "FAQ:" section. Below the FAQ, there is a table of download links for different operating systems:

Platform	Download Link	Icon
Windows 64-bit	Installer	It
Windows 32-bit	Installer	It
Macintosh OS 8/9 + X	Installer	It
Linux	ppd	It

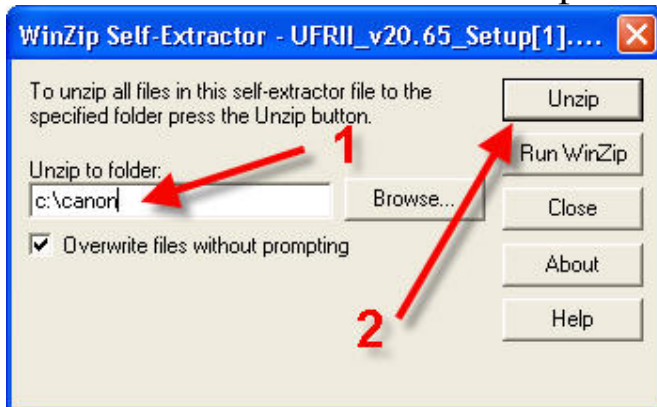
A red arrow points to the "Installer" link for Windows 32-bit. Below the table, there is an "FAQ's:" section with the following text:

1. **What are the new Canon printers?** The Krieger School of Arts and Sciences has entered into a contract with Canon to provide very high quality, highly reliable printers for the departments. We are part of that contract. We will be providing department printers with networked, color laser copier/printers that have the capability to copy, print, scan to email, and print to PDF. These printers are Canon imageRUNNER ADVANCE C5045. More information about these printers can be obtained from Canon's website.

2. Run the installer package



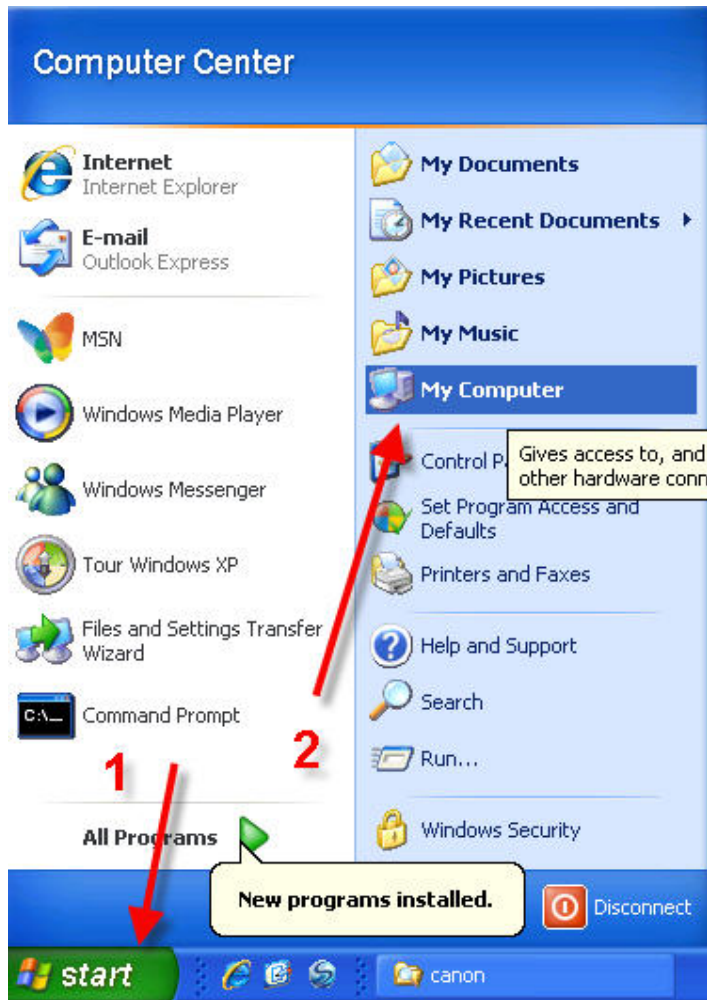
3. Enter "c:\canon" in the "Unzip to folder" box, then click Unzip



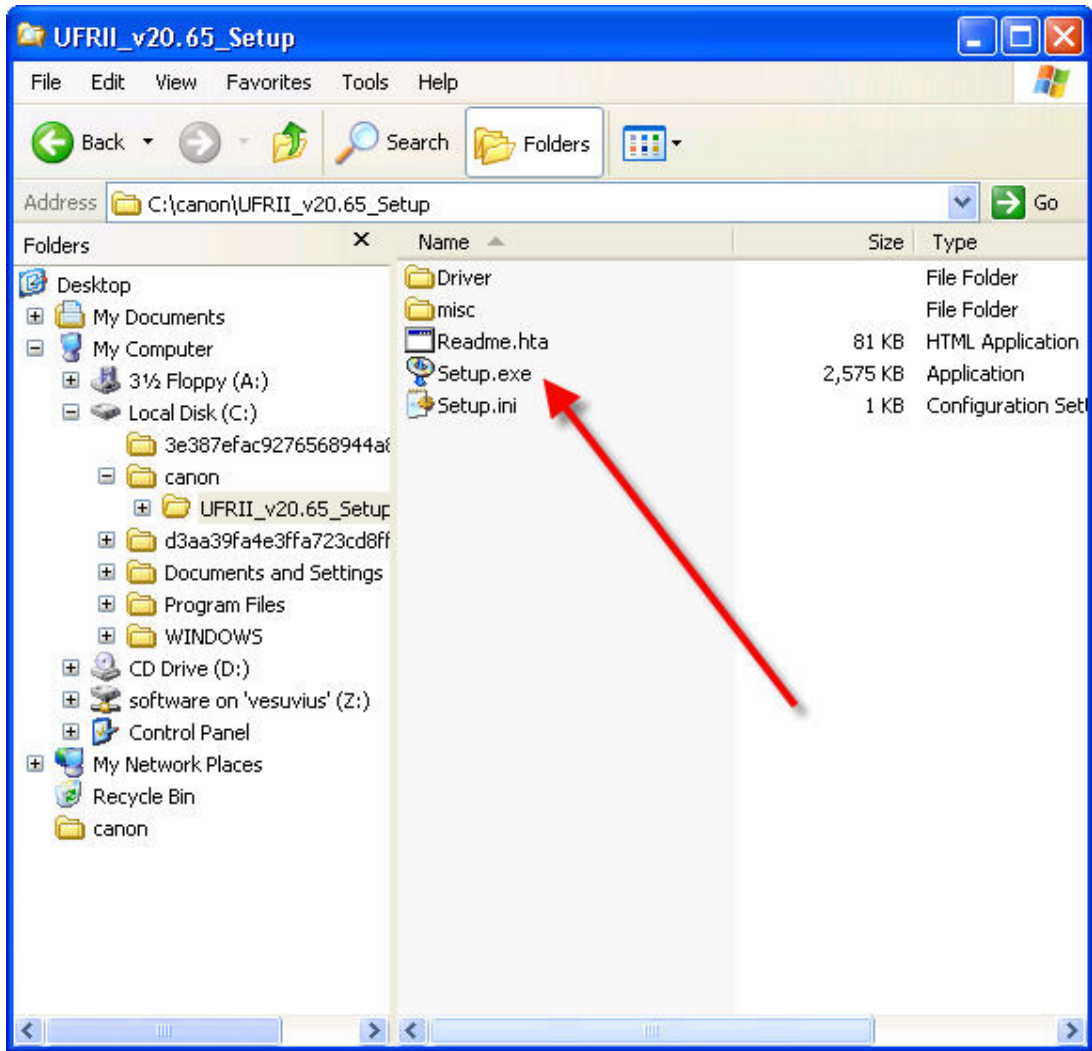
4. Click on "Ok" when the files have "unzipped"



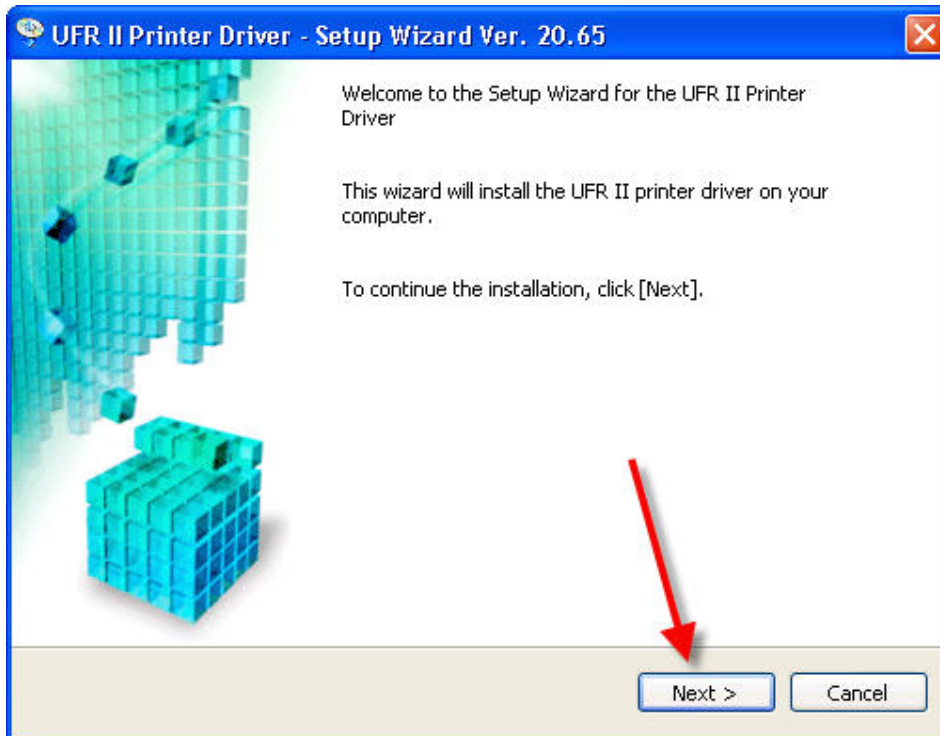
5. Click "Start", then "My Computer"



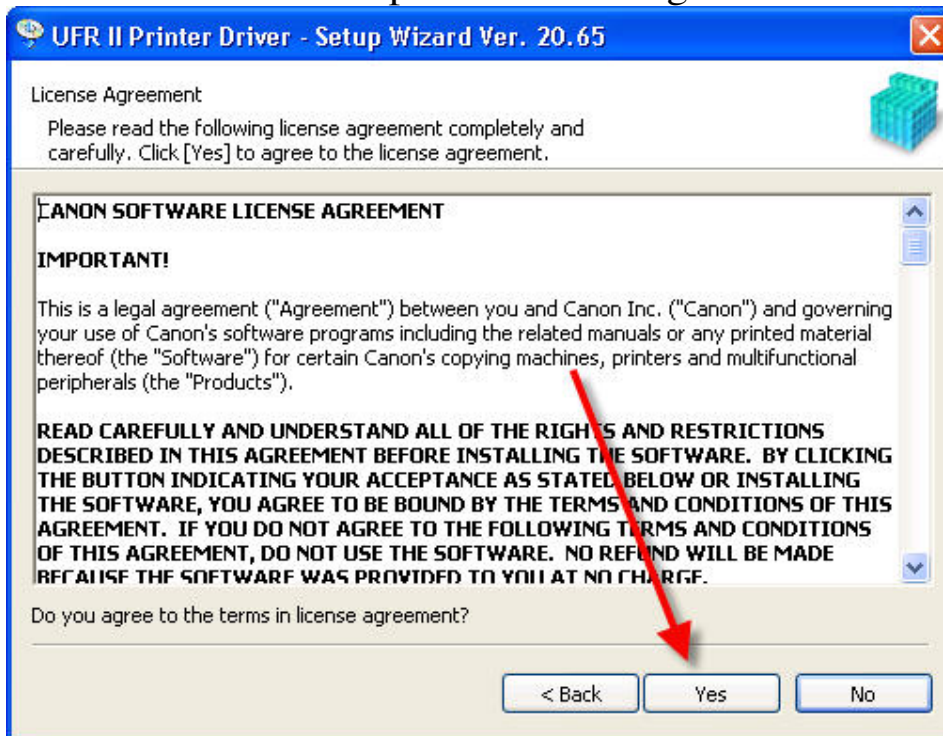
6. Double-click on "Setup.exe" to run the installer program



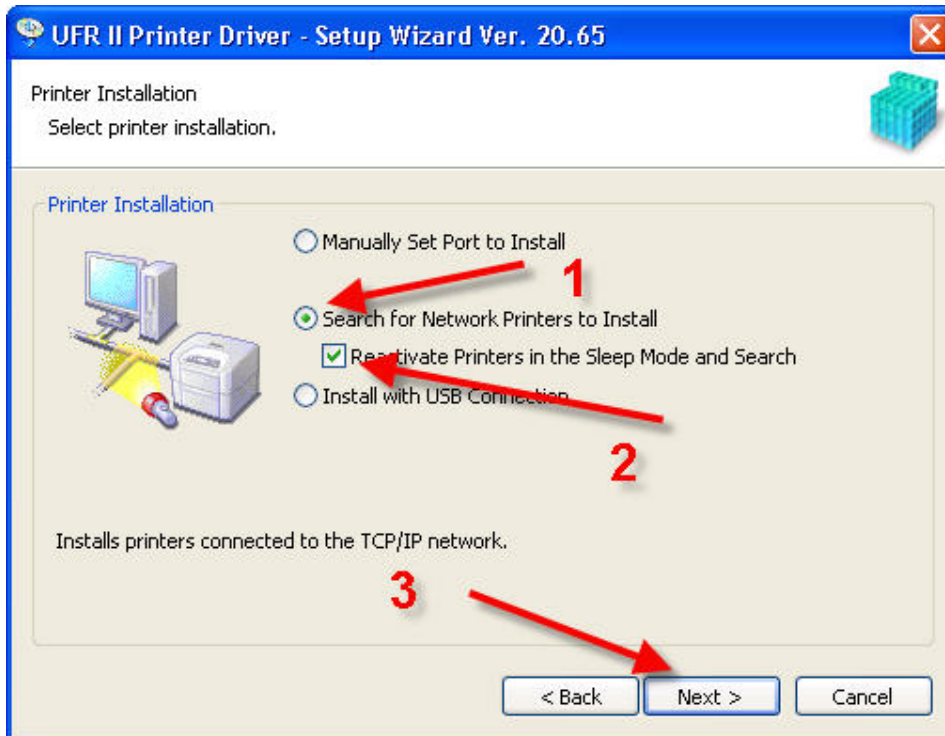
7. Click "Next" at the Welcome window



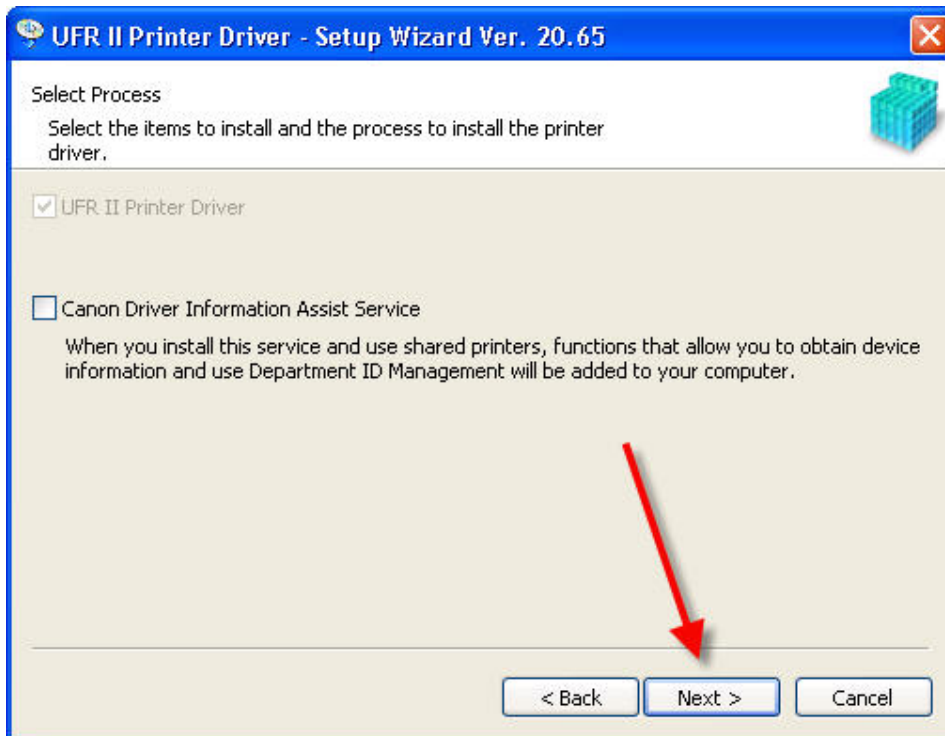
8. Click "Yes" to accept the License Agreement



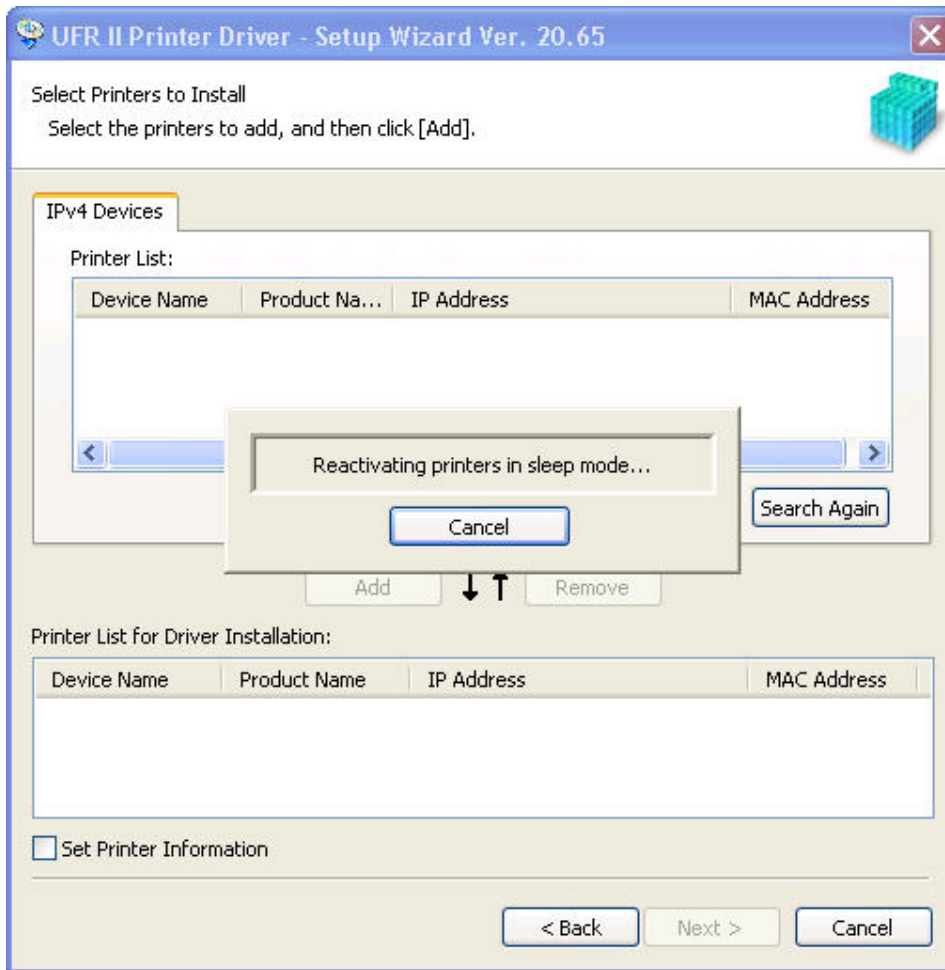
9. Select "Search for Network Printers to Install" and "Reactivate Printers in the Sleep Mode and Search", then "Next"



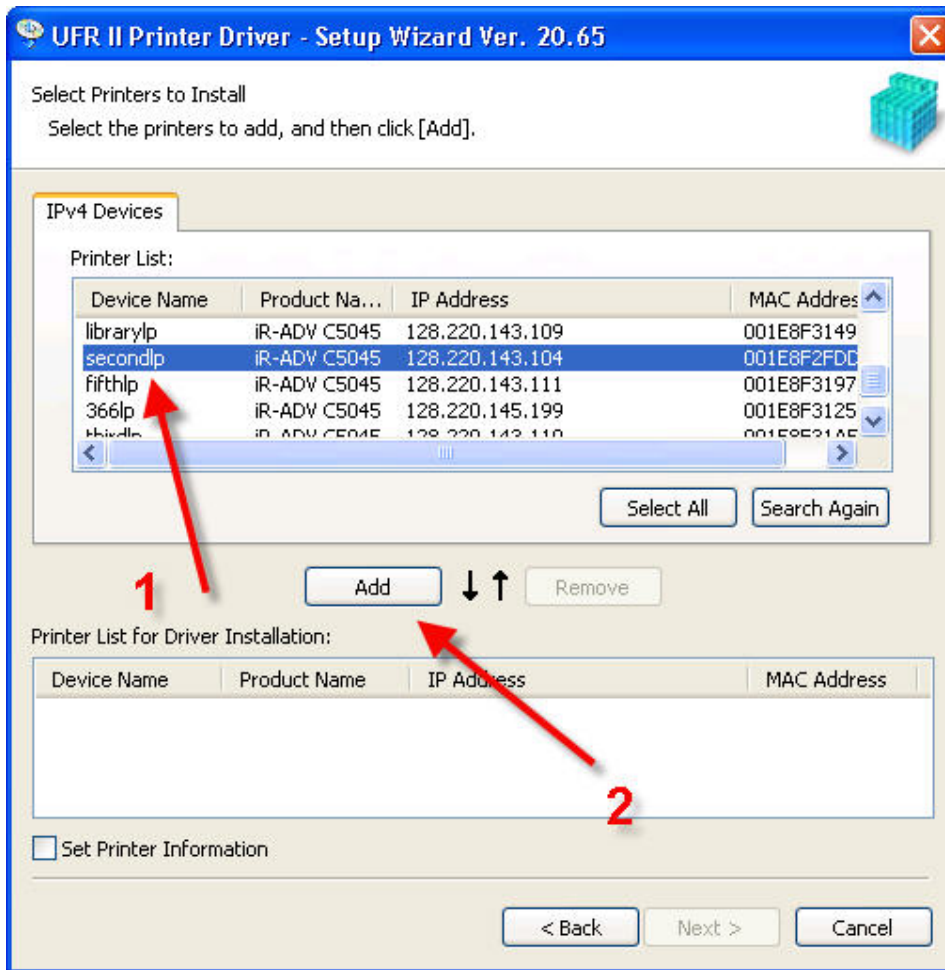
10. Click on "Next" on the Select Process window



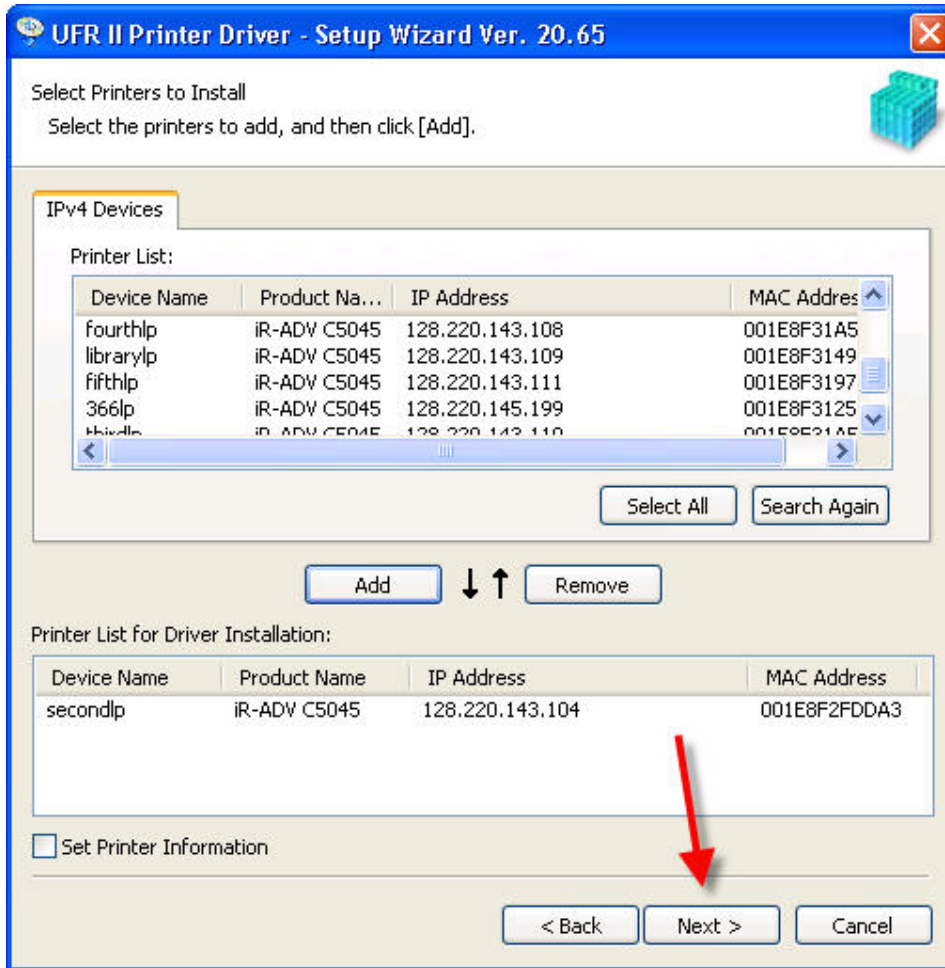
11. The "Reactivating printers in sleep mode" step may take a minute or two.



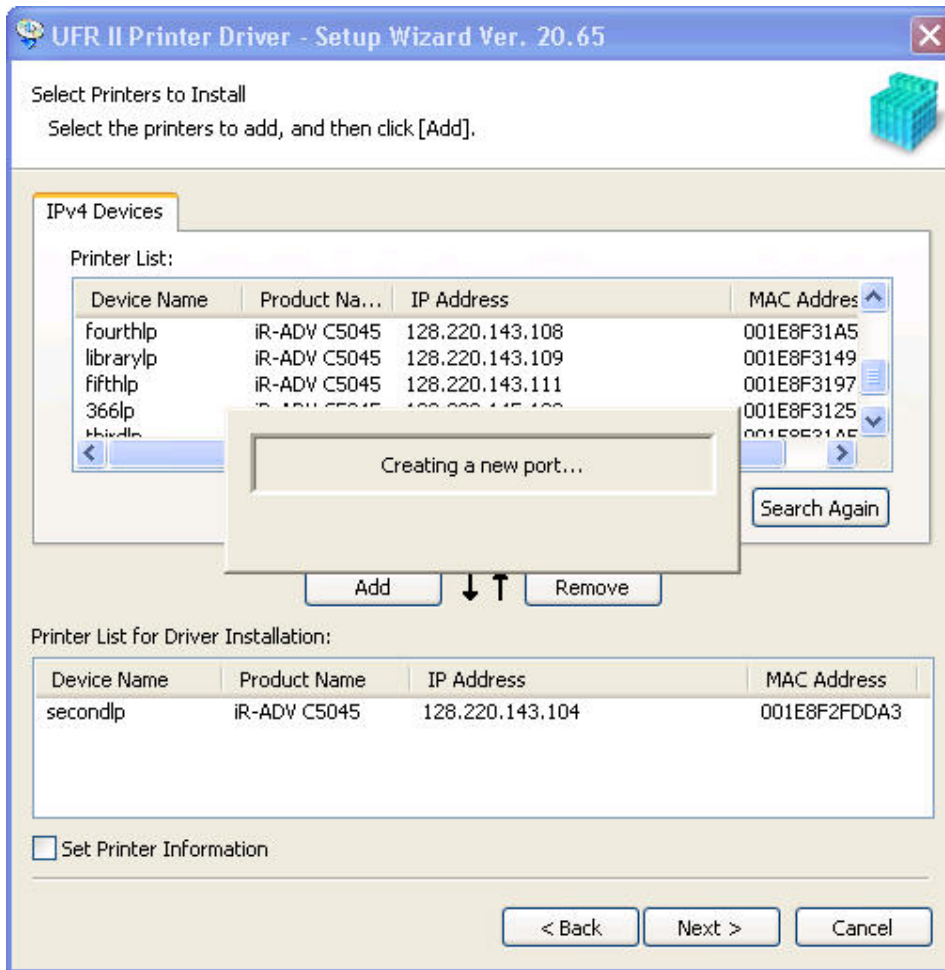
12. Select the printer you want to install, then click "Add"



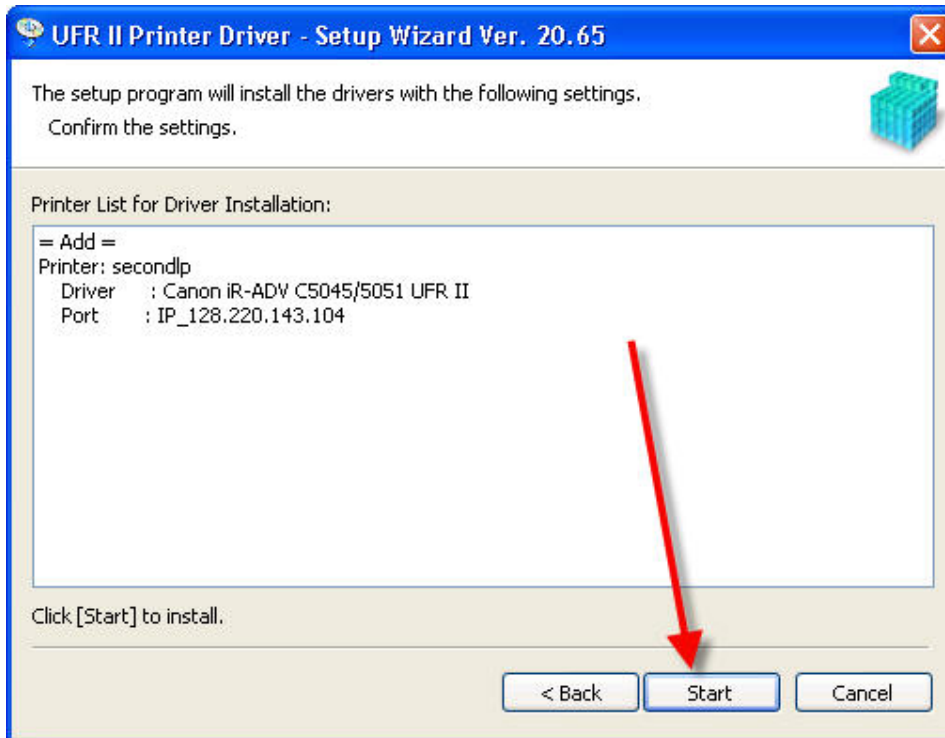
13. When finished choosing printers to install, click "Next"



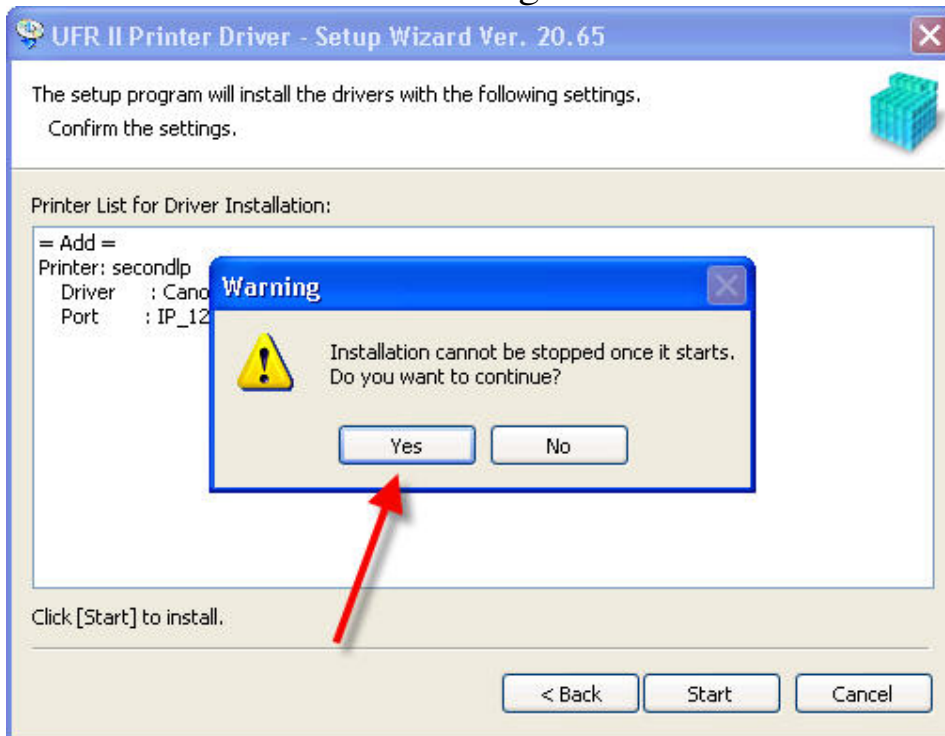
14. The "Creating a new port" step may take a minute or two



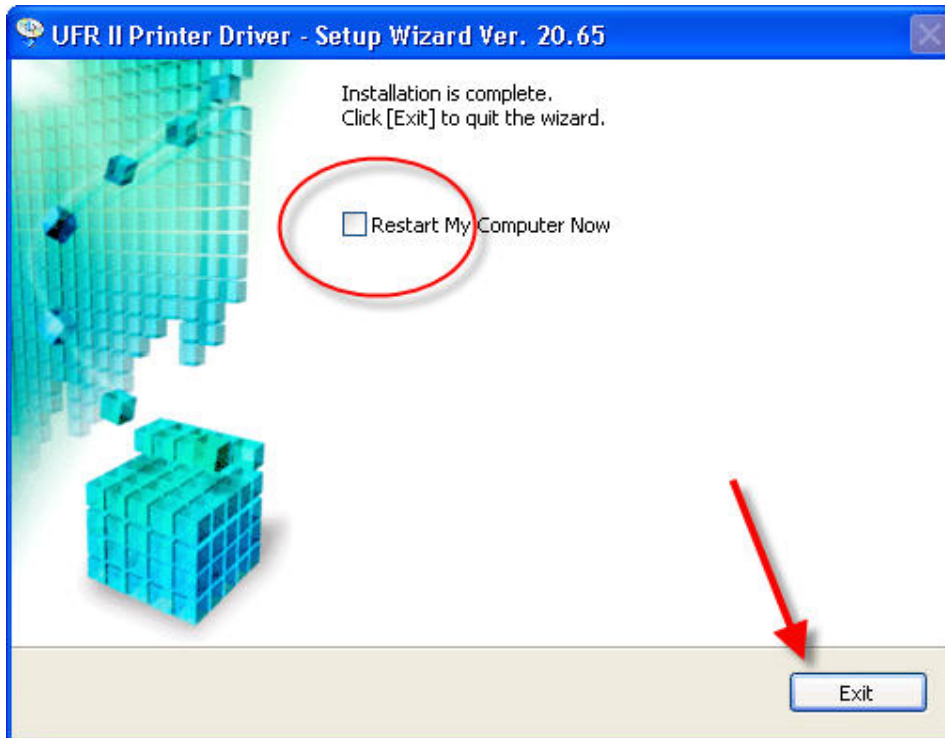
15. Click "Start" on the "Confirm the settings" page



16. Click "Yes" at the Warning window



17. Leave "Restart My Computer Now" UNCHECKED, and click "Exit"



Finished.