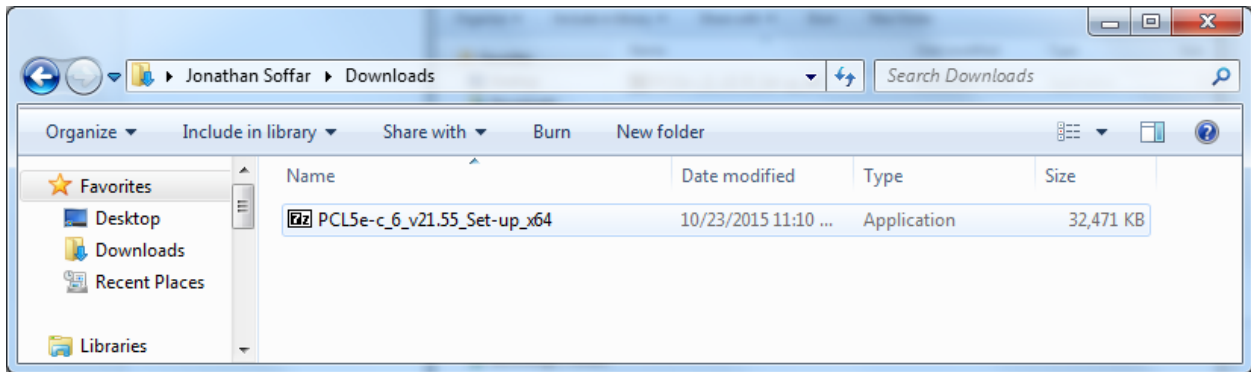
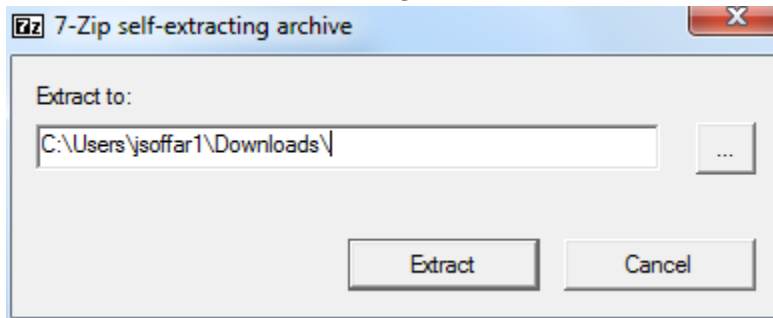


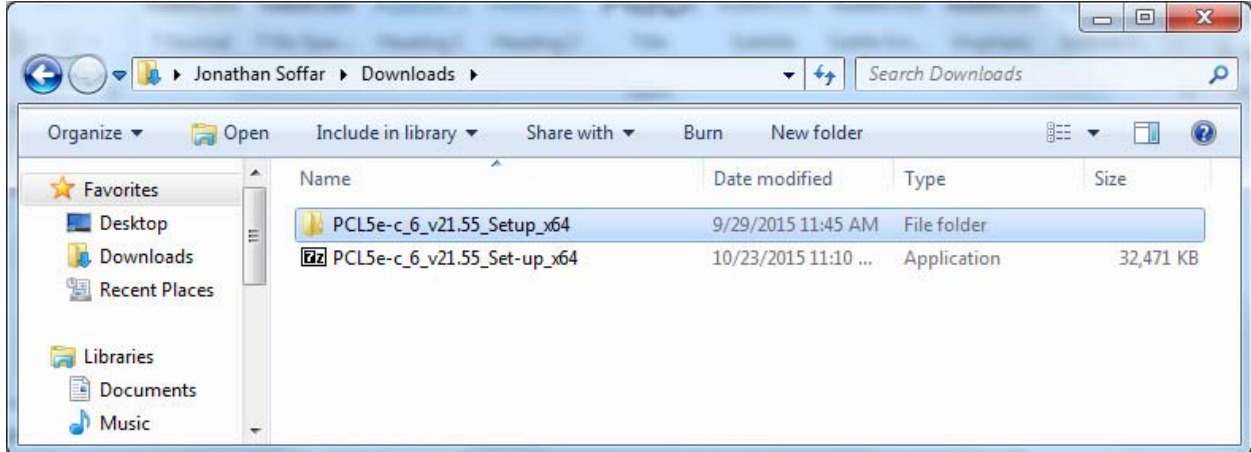
1. Download the installer



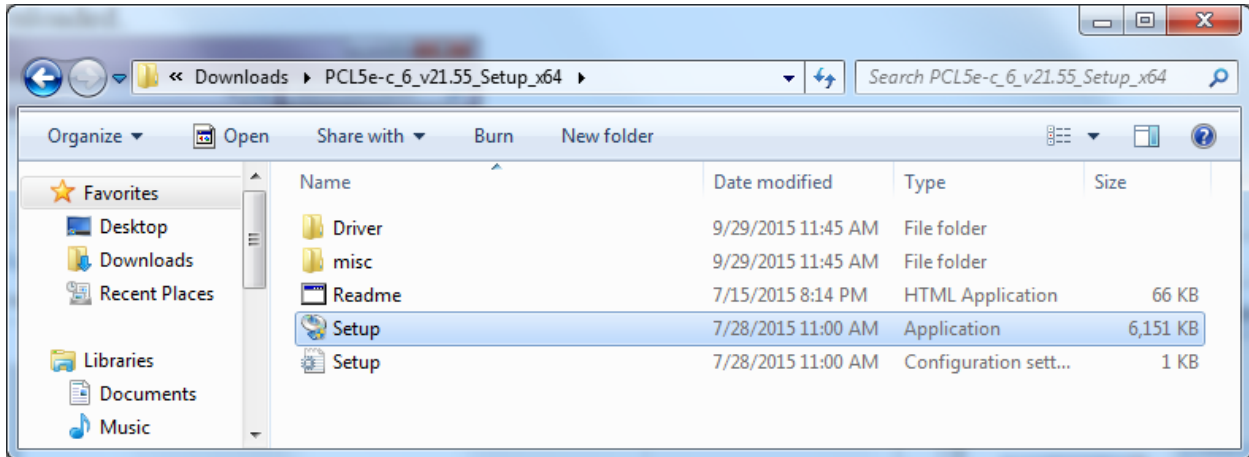
2. Double click or run the file
3. Extract the files, we are extracting to the downloads folder for this guide



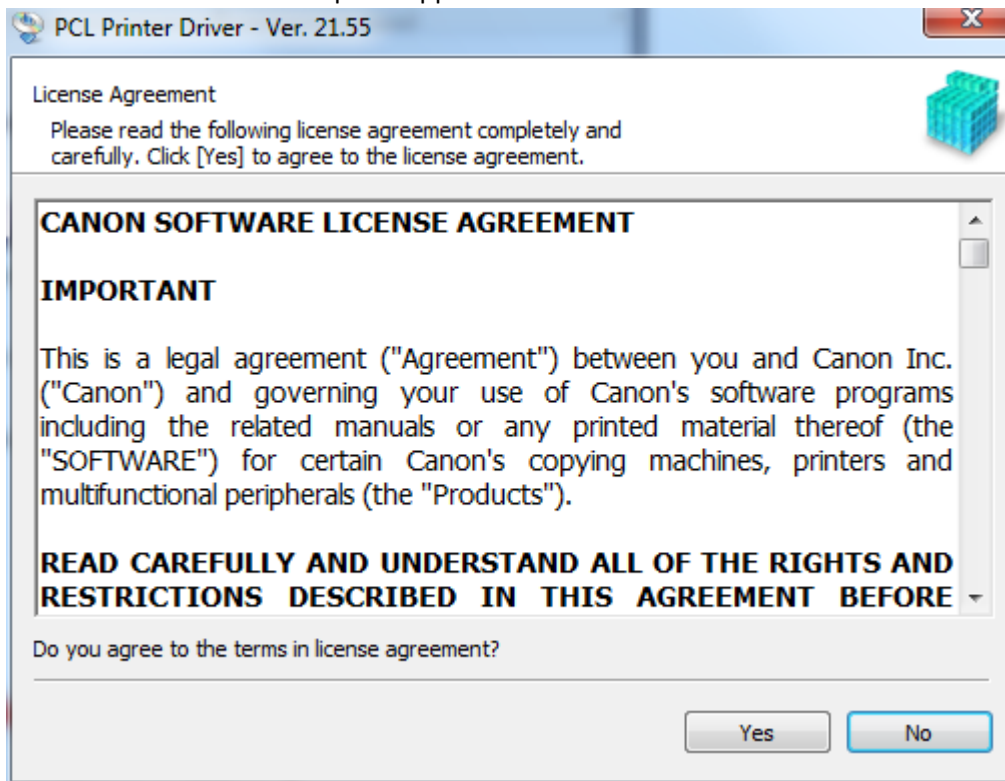
4. The files will extract and you will have a folder



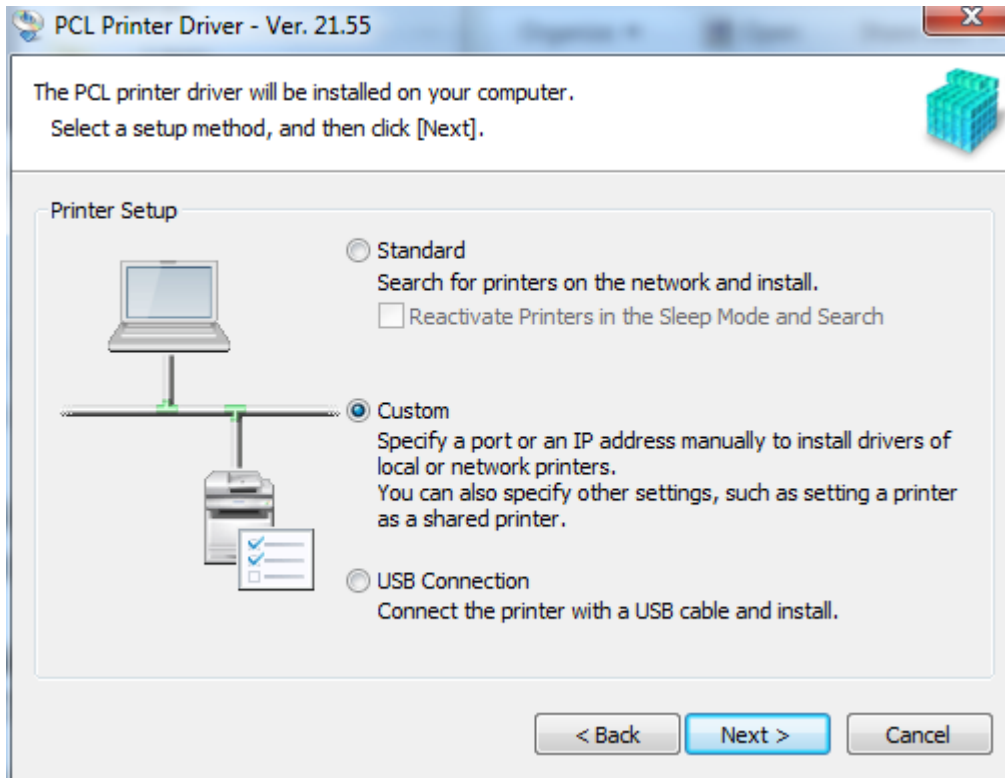
5. Double click or open the folder and you will see a list of files.



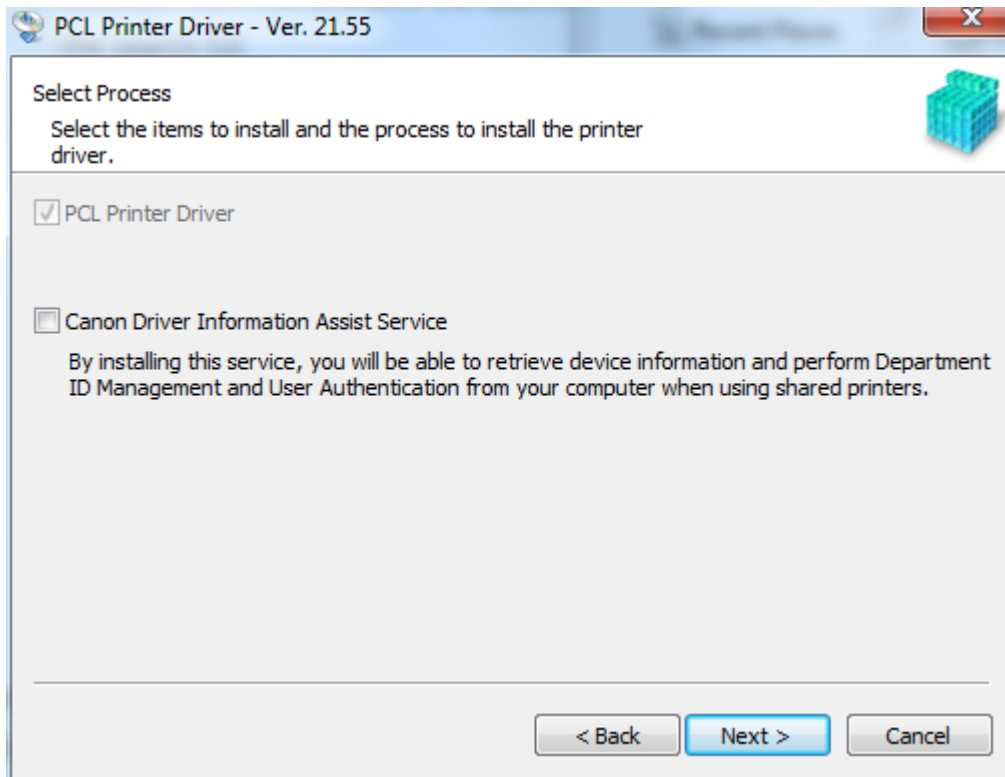
6. Double click or run the setup.exe application. Click Yes.



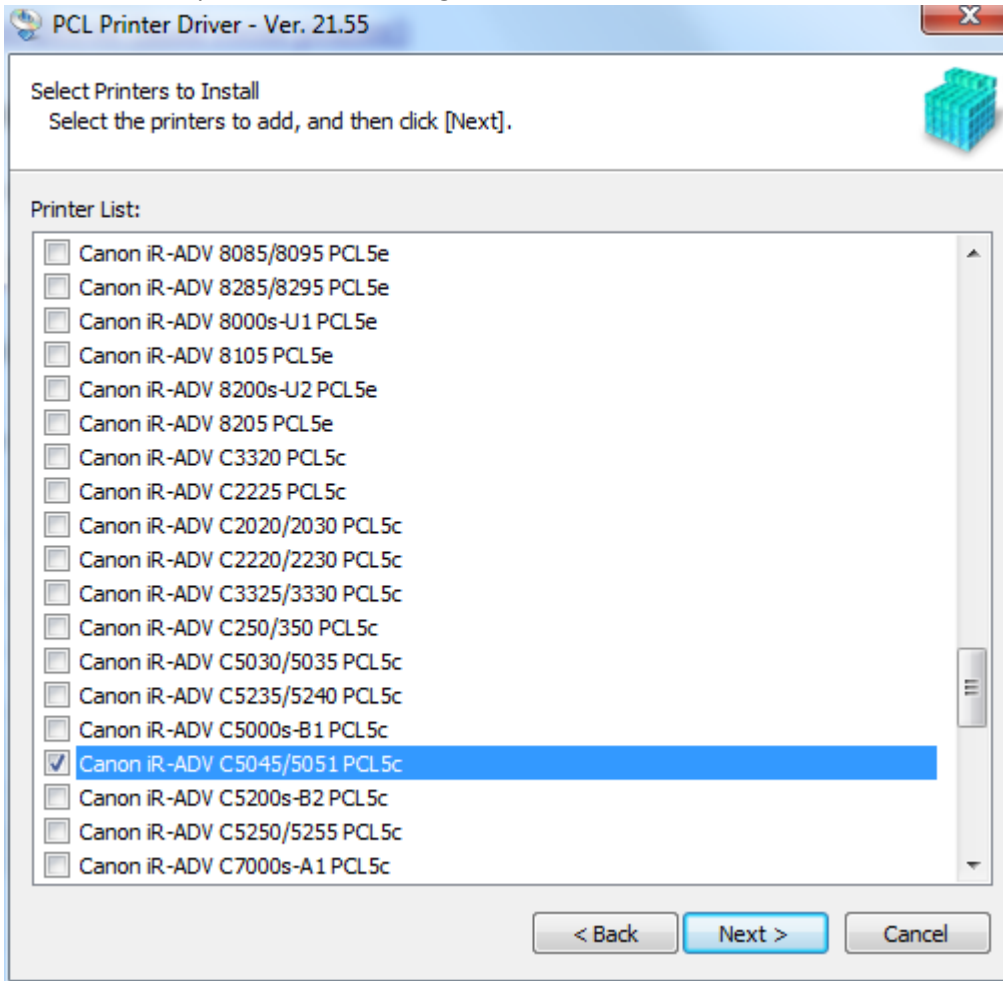
7. Select Custom and Click next



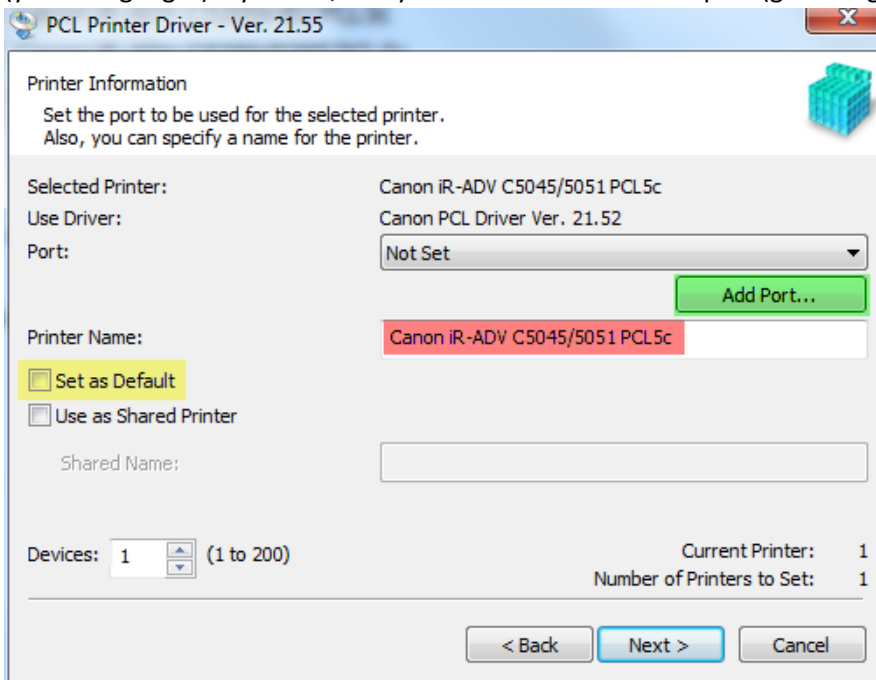
8. Select Next



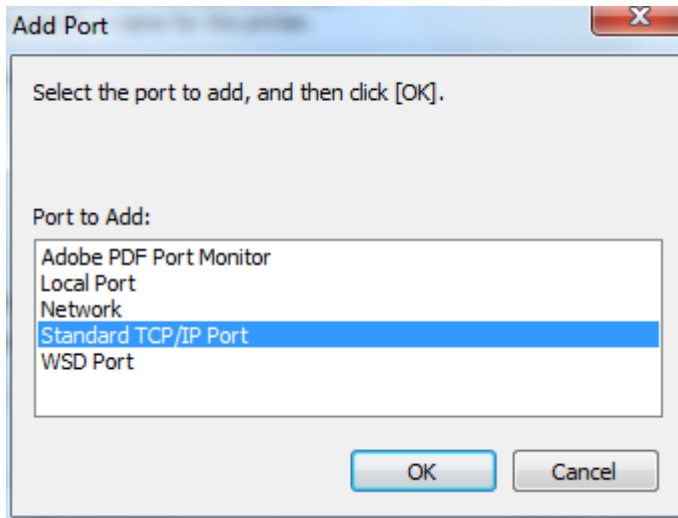
9. Scroll down and check off the printer you wish to install. In this example we will be installing the C5045 printers that are on every floor of the building. Check Canon iR-ADV C5045/5051 PCL5c and then Click next.



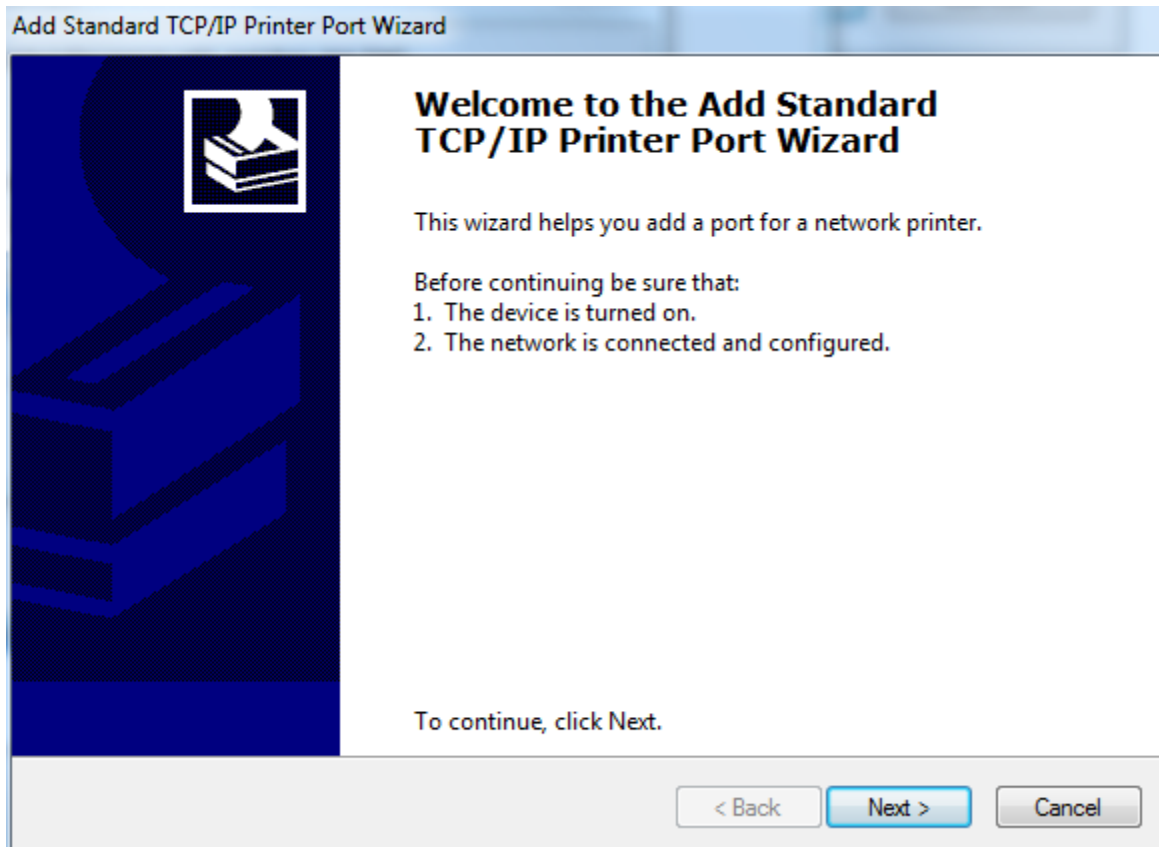
10. In this window you can give the printer a name for your use (red highlight), select it as the default printer (yellow highlight) if you like, and you will need to click add port (green highlight)



11. Select Standard TCP/IP Port and click OK



12. Click Next



13. Type the full name of the printer you wish to add. Printers have labels on them telling you their name. I am adding secondlp which is the printer on the second floor. Make sure to add .pha.jhu.edu to the name of the printer so that the network will be able to find it. The port name will fill in by itself. Click Next.

Add Standard TCP/IP Printer Port Wizard

Add port
For which device do you want to add a port?

Enter the Printer Name or IP address, and a port name for the desired device.

Printer Name or IP Address:

Port Name:

< Back Next > Cancel

14. Click Finish

Add Standard TCP/IP Printer Port Wizard

Completing the Add Standard TCP/IP Printer Port Wizard

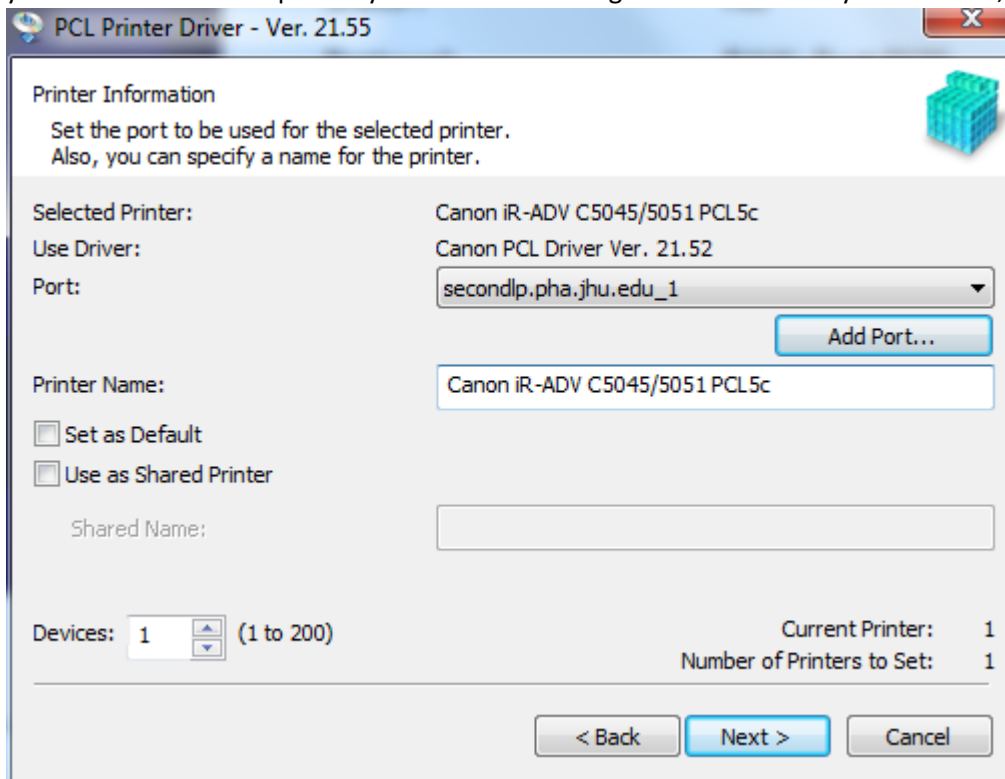
You have selected a port with the following characteristics.

SNMP:	No
Protocol:	RAW, Port 9100
Device:	secondlp.pha.jhu.edu
Port Name:	secondlp.pha.jhu.edu_1
Adapter Type:	secondlp

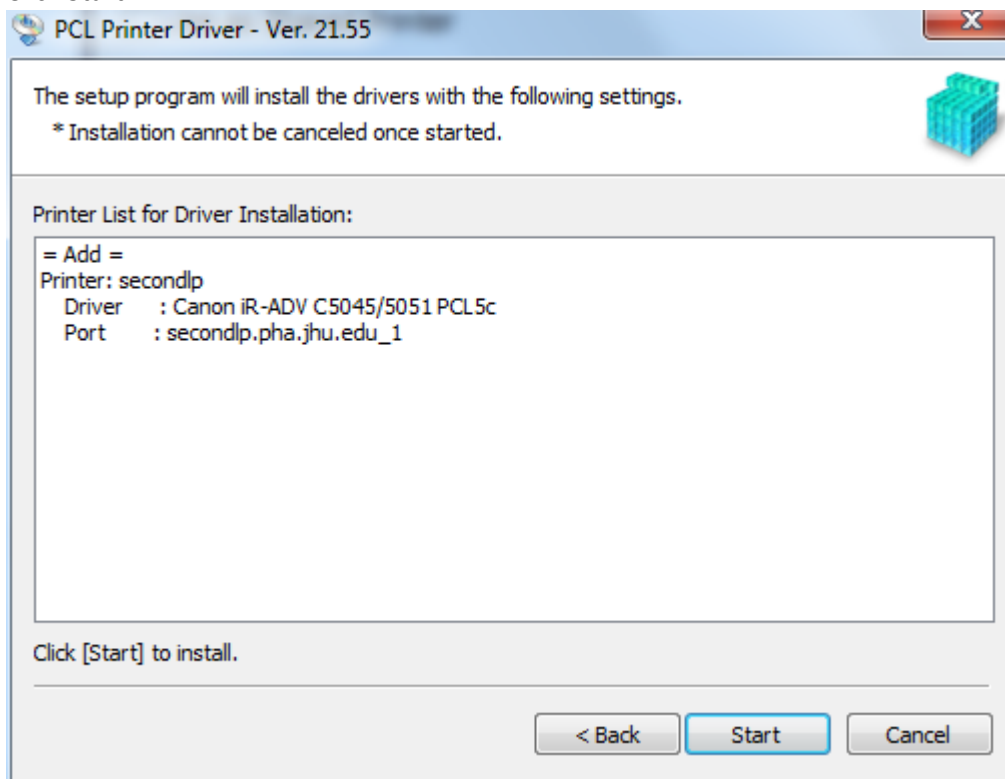
To complete this wizard, click Finish.

< Back Finish Cancel

15. We are now back at the same screen as step 10, except the port has been filled in. You can still select whether you'd like to make the printer your default or change the name. Once you are done, click Next.



16. Click Start



17. The driver and printer will install. You may need to restart before your printer is usable but in our experience it is unnecessary. Click Exit and Happy Printing!

