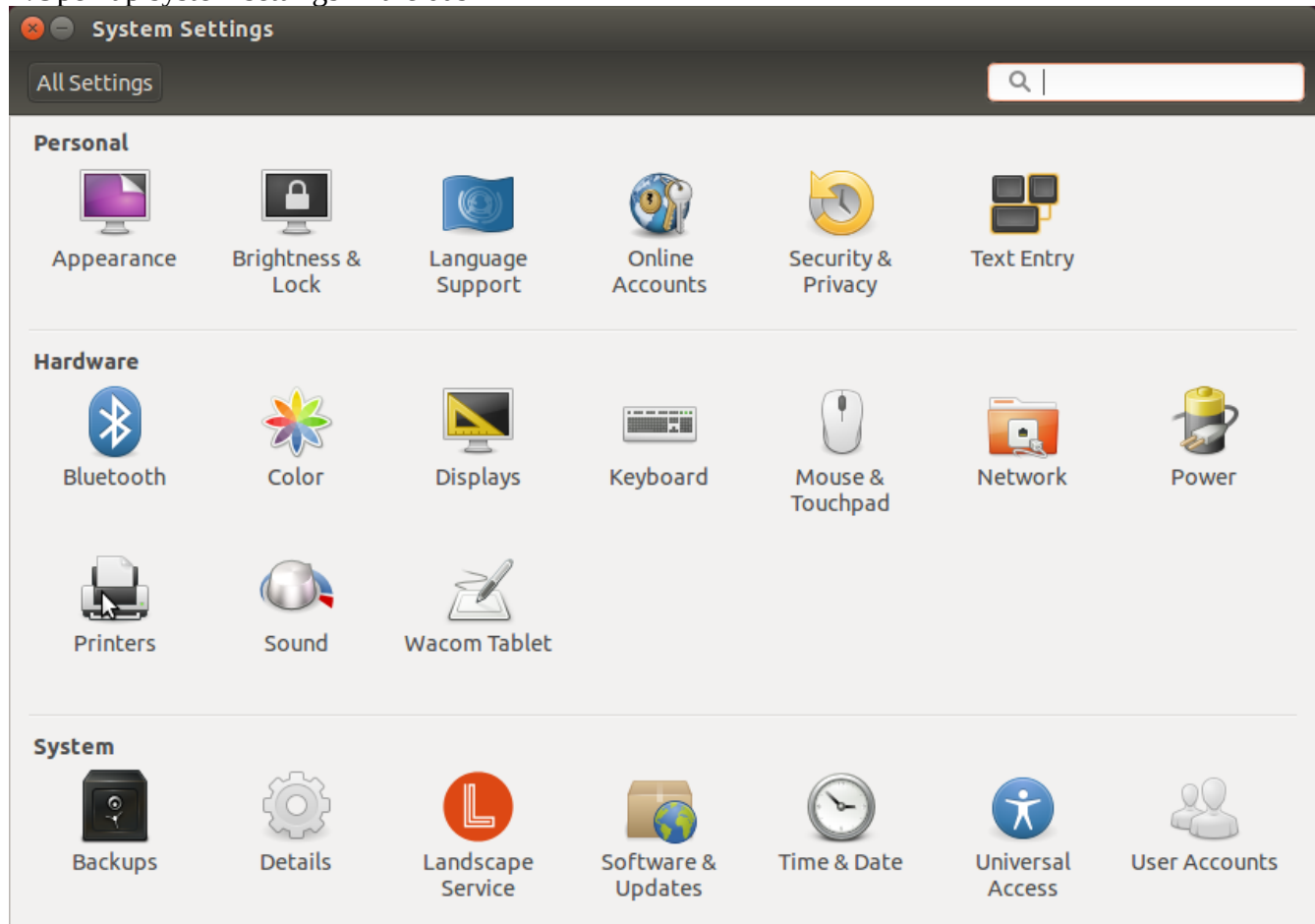
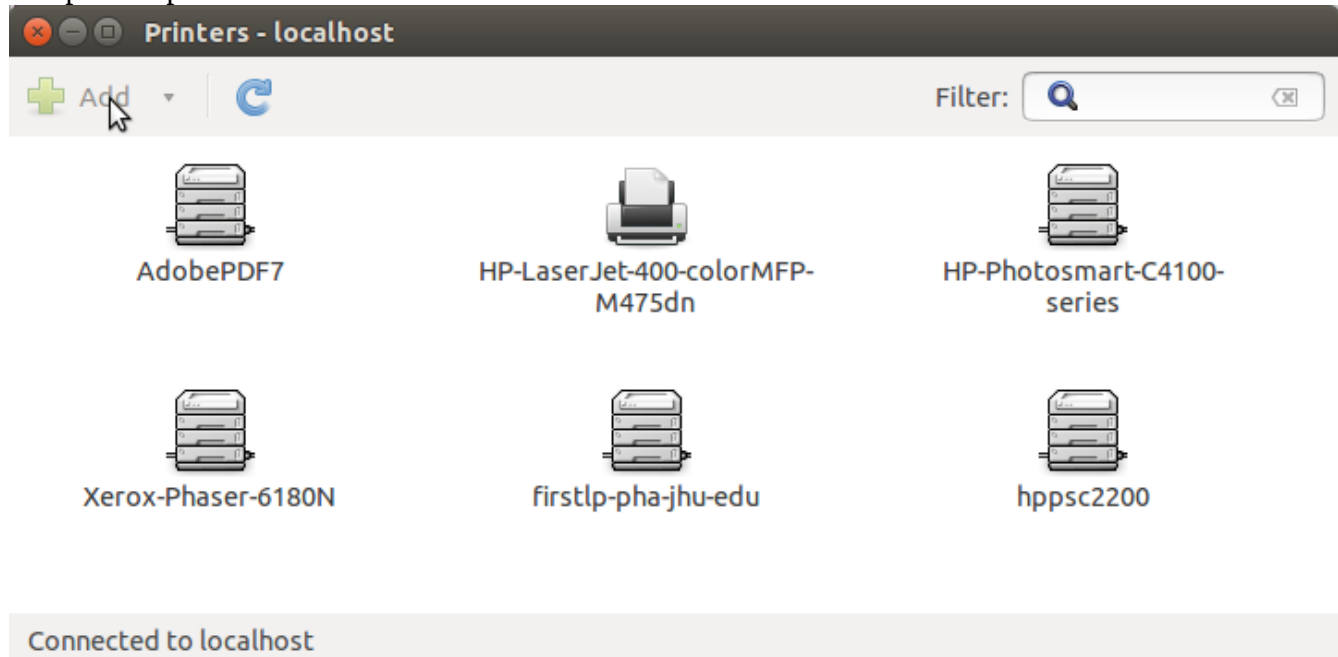


Install network printers on linux (Ubuntu): If you need help please email pha-help@jhu.edu

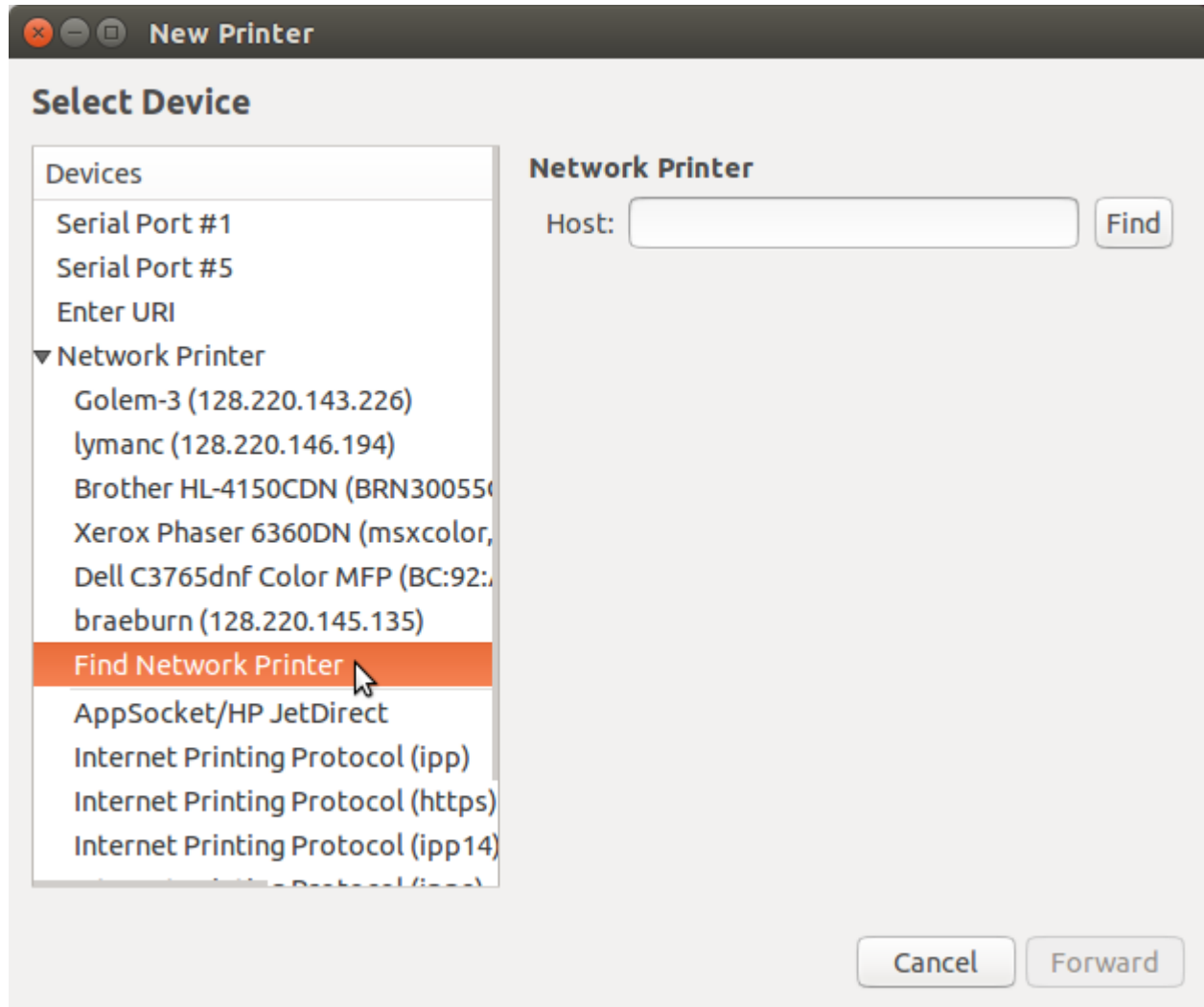
1: Open up system settings in the dash



2: Open the printers menu under Hardware

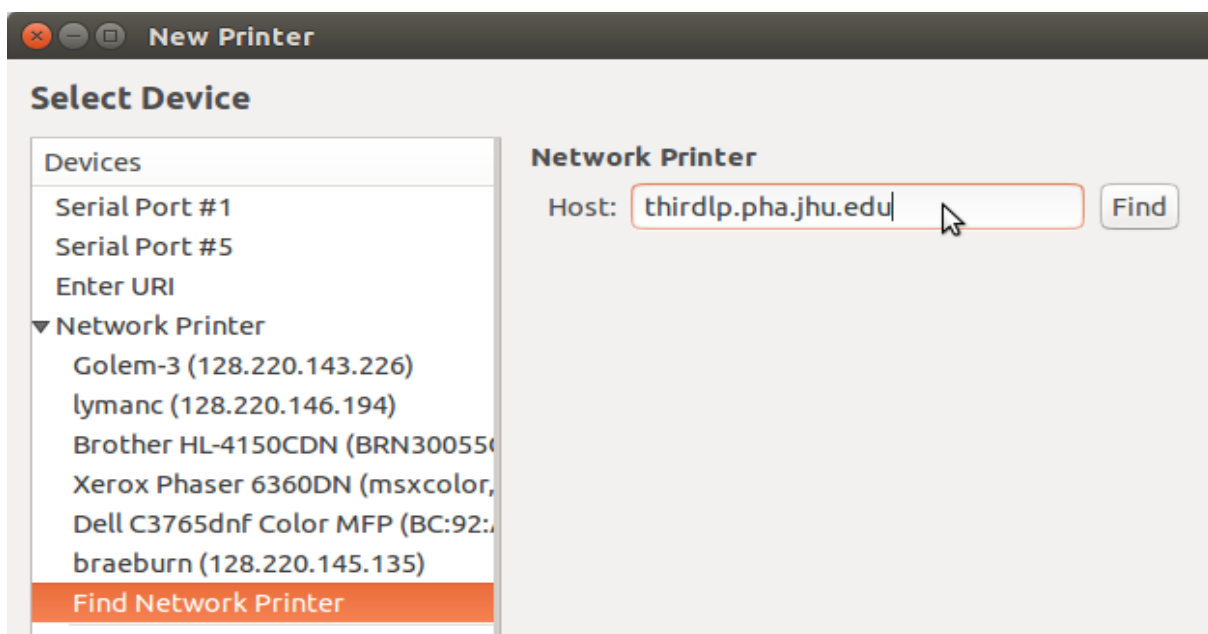


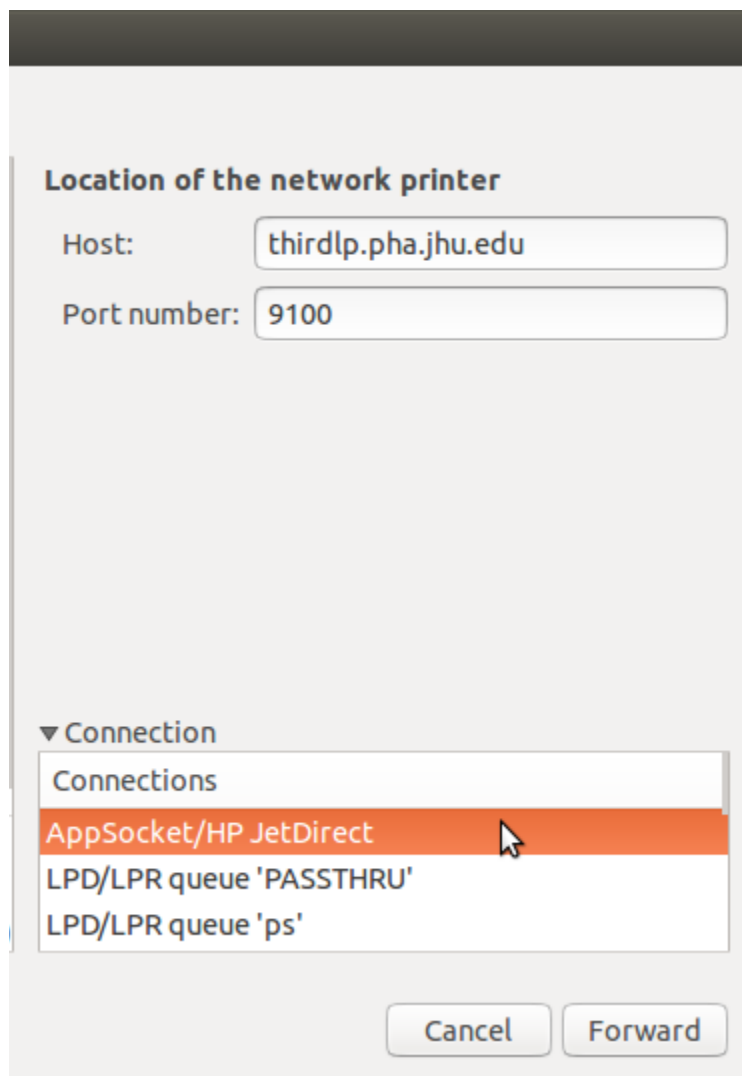
3: Select Find Network Printer



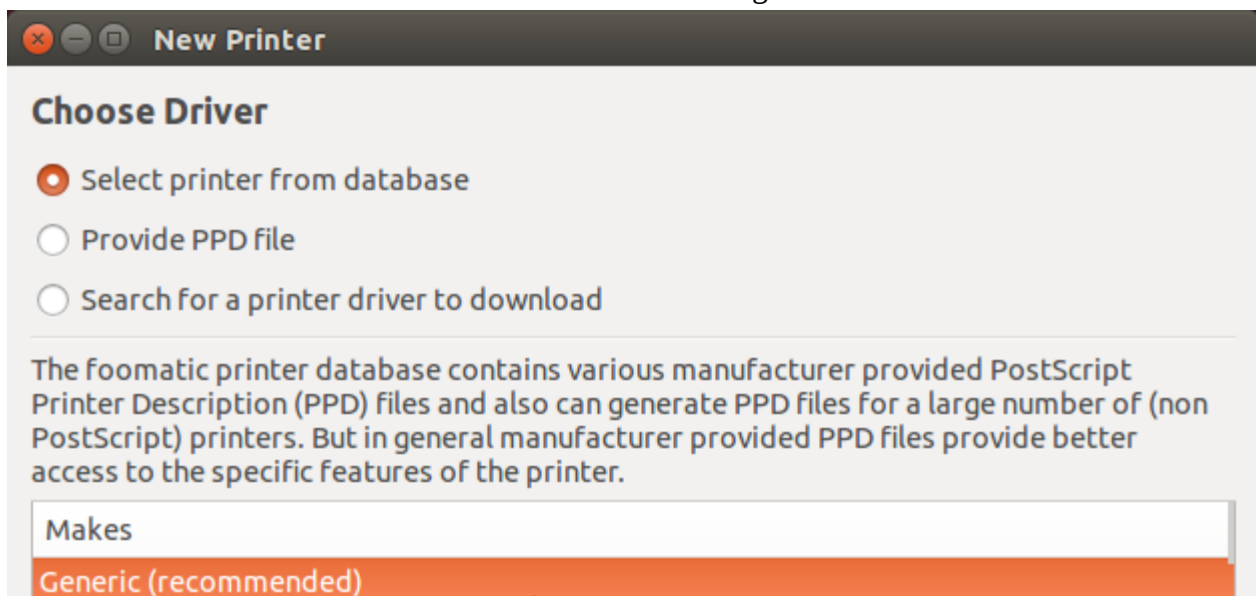
4: Input the name of the printer (for our example we will use thirdlp) and click Find on the right

5: Select Appsocket/HP JetDirect for the connection type and click forward on the bottom right

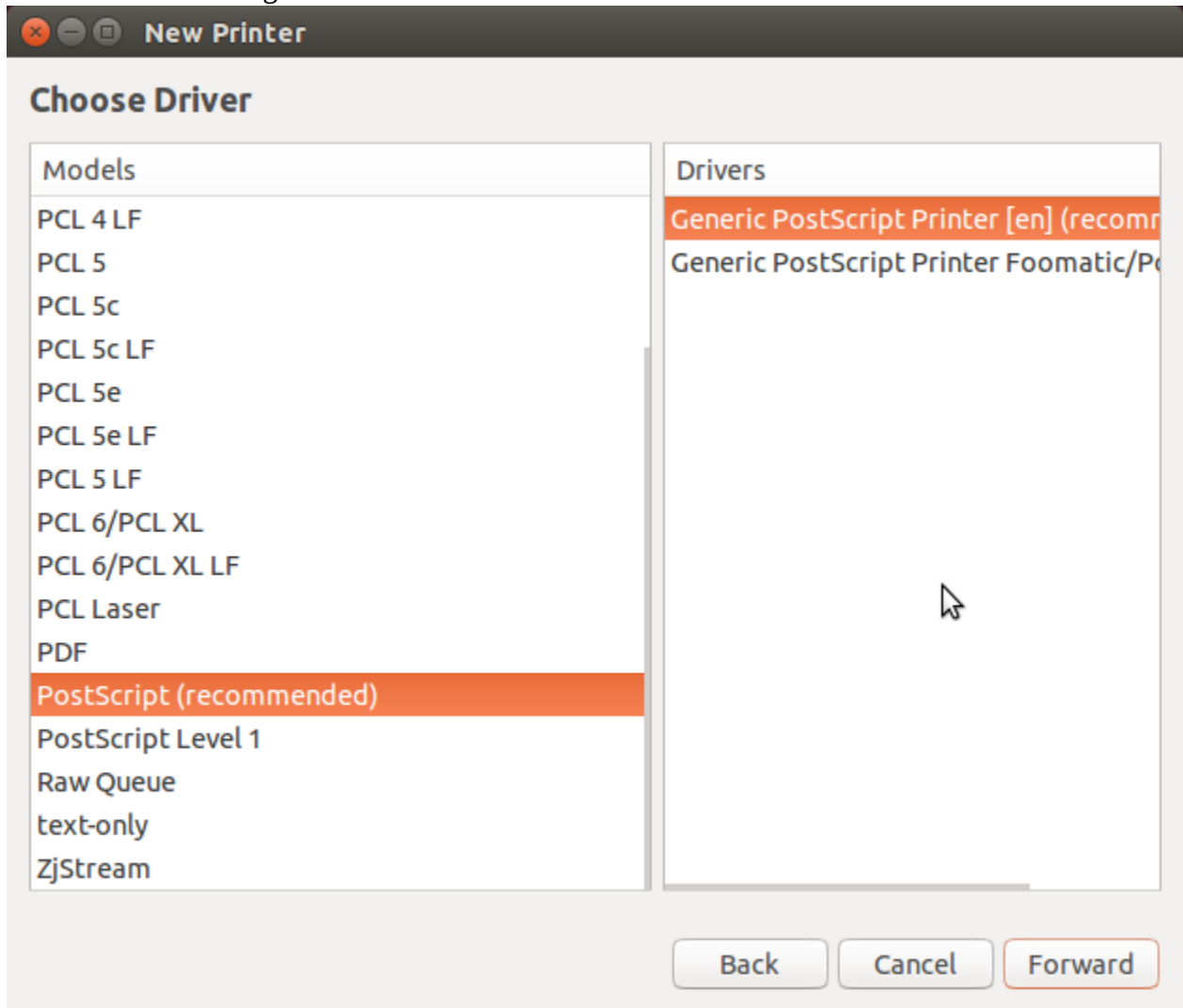




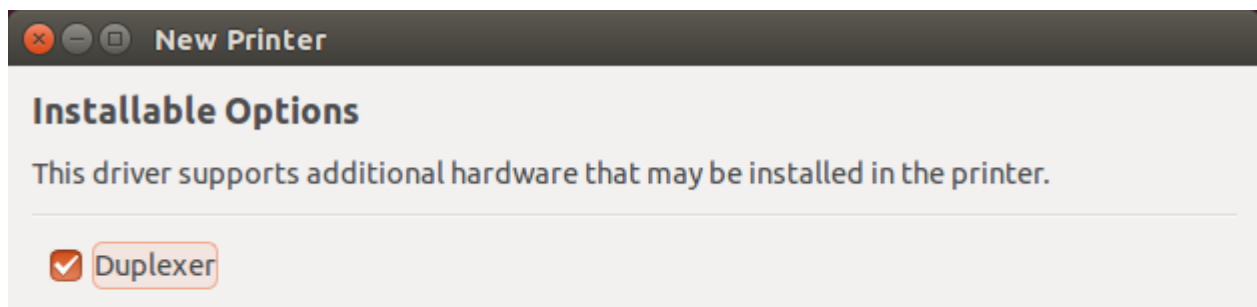
6: Select Generic for the driver and hit forward at the bottom right.



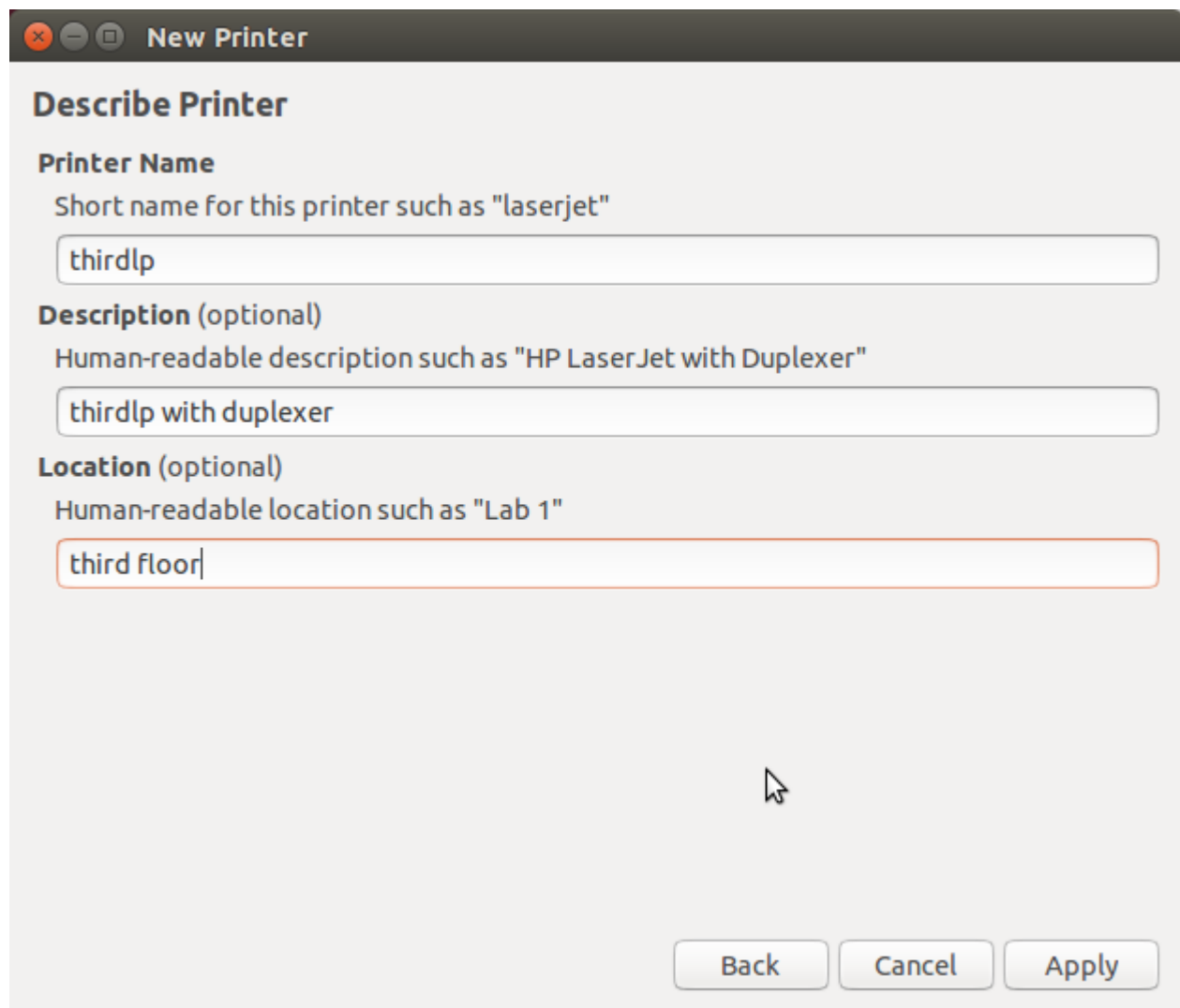
7: Select PostScript on the left and Generic PostScript Printer [en] (recommended) on the right and hit forward at the bottom right.



8: Select any Installable Options you would like and hit forward at the bottom right



9: Provide the name of the printer you would like for the Printer Name. Provide a description and location if you'd like, but they are optional. Then hit Apply.



The image shows a window titled "New Printer" with a dark header bar containing window control icons. The main content area is titled "Describe Printer" and contains three sections:

- Printer Name**: A label "Printer Name" followed by the instruction "Short name for this printer such as 'laserjet'". Below is a text input field containing "thirdlp".
- Description (optional)**: A label "Description (optional)" followed by the instruction "Human-readable description such as 'HP LaserJet with Duplexer'". Below is a text input field containing "thirdlp with duplexer".
- Location (optional)**: A label "Location (optional)" followed by the instruction "Human-readable location such as 'Lab 1'". Below is a text input field containing "third floor".

At the bottom right of the dialog, there are three buttons: "Back", "Cancel", and "Apply". A mouse cursor is visible over the "Apply" button.

Now your printer should be installed and it may ask you if you'd like to print a test page. Feel free to say yes so that you can confirm that it is working correctly. If you have any other questions or concerns, please contact us at pha-help@jhu.edu